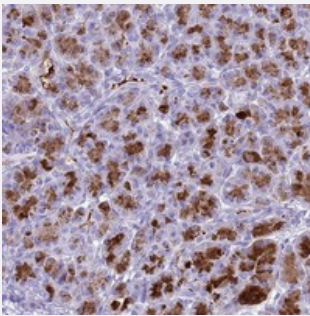


# BEST2 polyclonal antibody

Catalog # PAB24487      Size 100 uL

## Applications



### Immunohistochemistry (Formalin/PFA-fixed paraffin-embedded sections)

Immunohistochemical staining of human pancreas with BEST2 polyclonal antibody (Cat # PAB24487) shows strong cytoplasmic positivity in exocrine glandular cells at 1:200-1:500 dilution.

## Specification

Product Description	Rabbit polyclonal antibody raised against recombinant BEST2.
Immunogen	Recombinant protein corresponding to amino acids of human BEST2.
Sequence	RRLSFLLRKNSCVSEASTGASCSCAVVPEGAAPECS CGDPLLDPGLPEPEAPPPAGPEPLTLIP GPVEPFSVTMP
Host	Rabbit
Reactivity	Human
Form	Liquid
Purification	Antigen affinity purification
Isotype	IgG
Recommend Usage	Immunohistochemistry (1:200-1:500) The optimal working dilution should be determined by the end user.
Storage Buffer	In PBS, pH 7.2 (40% glycerol, 0.02% sodium azide)

**Storage Instruction**

Store at 4°C. For long term storage store at -20°C.  
Aliquot to avoid repeated freezing and thawing.

**Note**

This product contains sodium azide: a POISONOUS AND HAZARDOUS SUBSTANCE which should be handled by trained staff only.

## Applications

- Immunohistochemistry (Formalin/PFA-fixed paraffin-embedded sections)

Immunohistochemical staining of human pancreas with BEST2 polyclonal antibody (Cat # PAB24487) shows strong cytoplasmic positivity in exocrine glandular cells at 1:200-1:500 dilution.

## Gene Info — BEST2

**Entrez GeneID**[54831](#)**Protein Accession#**[Q8NFU1](#)**Gene Name**

BEST2

**Gene Alias**

FLJ20132, VMD2L1

**Gene Description**

bestrophin 2

**Omim ID**[607335](#)**Gene Ontology**[Hyperlink](#)**Gene Summary**

This gene is a member of the bestrophin gene family of anion channels. Bestrophin genes share a similar gene structure with highly conserved exon-intron boundaries, but with distinct 3' ends. Bestrophins are transmembrane proteins that contain a homologous region rich in aromatic residues, including an invariant arg-phe-pro motif. Mutation in one of the family members (bestrophin 1) is associated with vitelliform macular dystrophy. The bestrophin 2 gene is mainly expressed in the retinal pigment epithelium and colon. [provided by RefSeq]

**Other Designations**

VMD2-like gene 1|vitelliform macular dystrophy 2-like 1

## Publication Reference

- [Lineage-Specific Expression of Bestrophin-2 and Bestrophin-4 in Human Intestinal Epithelial Cells.](#)

Ito G, Okamoto R, Murano T, Shimizu H, Fujii S, Nakata T, Mizutani T, Yui S, Akiyama-Morio J, Nemoto Y, Okada E, Araki A, Ohtsuka K, Tsuchiya K, Nakamura T, Watanabe M.

PLoS One 2013 Nov; 8(11):e79693.

Application: IF, Human, Small intestinal, Colon