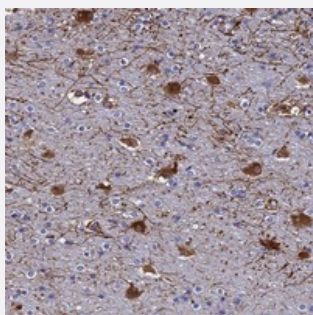


SYT13 polyclonal antibody

Catalog # PAB24486 Size 100 uL

Applications



Immunohistochemistry (Formalin/PFA-fixed paraffin-embedded sections)

Immunohistochemical staining of human cerebral cortex with SYT13 polyclonal antibody (Cat # PAB24486) shows strong cytoplasmic positivity in neuronal cells at 1:50-1:200 dilution.

Specification

Product Description	Rabbit polyclonal antibody raised against recombinant SYT13.
Immunogen	Recombinant protein corresponding to amino acids of human SYT13.
Sequence	TLTLTLRTCDRFSRHSVAGELRLGLDGTSLVPLGAAQWGELKTSAKEPSAGAGEVLLSISYLPAA RLLVVLIAKAKNLHSNQSKE
Host	Rabbit
Reactivity	Human
Form	Liquid
Purification	Antigen affinity purification
Isotype	IgG
Recommend Usage	Immunohistochemistry (1:50-1:200) The optimal working dilution should be determined by the end user.
Storage Buffer	In PBS, pH 7.2 (40% glycerol, 0.02% sodium azide)

Storage Instruction

Store at 4°C. For long term storage store at -20°C.
Aliquot to avoid repeated freezing and thawing.

Note

This product contains sodium azide: a POISONOUS AND HAZARDOUS SUBSTANCE which should be handled by trained staff only.

Applications

- Immunohistochemistry (Formalin/PFA-fixed paraffin-embedded sections)

Immunohistochemical staining of human cerebral cortex with SYT13 polyclonal antibody (Cat # PAB24486) shows strong cytoplasmic positivity in neuronal cells at 1:50-1:200 dilution.

Gene Info — SYT13

Entrez GeneID [57586](#)

Protein Accession# [Q7L8C5](#)

Gene Name SYT13

Gene Alias KIAA1427

Gene Description synaptotagmin XIII

Omim ID [607716](#)

Gene Ontology [Hyperlink](#)

Gene Summary SYT13 belongs to the large synaptotagmin protein family. All synaptotagmins show type I membrane topology, with an extracellular N terminus, a single transmembrane region, and a cytoplasmic C terminus containing tandem C2 domains. Major functions of synaptotagmins include vesicular trafficking, exocytosis, and secretion.[supplied by OMIM]

Other Designations -

Disease

- [Tobacco Use Disorder](#)