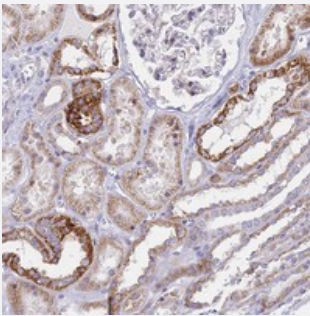


PRR13 polyclonal antibody

Catalog # PAB24484 Size 100 uL

Applications



Immunohistochemistry (Formalin/PFA-fixed paraffin-embedded sections)

Immunohistochemical staining of human kidney with PRR13 polyclonal antibody (Cat # PAB24484) shows strong cytoplasmic positivity in renal tubules.

Specification

Product Description	Rabbit polyclonal antibody raised against recombinant PRR13.
Immunogen	Recombinant protein corresponding to amino acids of human PRR13.
Sequence	PYPPPAPGIPPVNPLAPGMVGPAVVDKMKQKK
Host	Rabbit
Reactivity	Human
Form	Liquid
Purification	Antigen affinity purification
Isotype	IgG
Recommend Usage	Immunohistochemistry (1:10-1:20) The optimal working dilution should be determined by the end user.
Storage Buffer	In PBS, pH 7.2 (40% glycerol, 0.02% sodium azide)
Storage Instruction	Store at 4°C. For long term storage store at -20°C. Aliquot to avoid repeated freezing and thawing.

Note

This product contains sodium azide: a POISONOUS AND HAZARDOUS SUBSTANCE which should be handled by trained staff only.

Applications

- Immunohistochemistry (Formalin/PFA-fixed paraffin-embedded sections)

Immunohistochemical staining of human kidney with PRR13 polyclonal antibody (Cat # PAB24484) shows strong cytoplasmic positivity in renal tubules.

Gene Info — PRR13

Entrez GeneID	54458
Protein Accession#	Q9NZ81
Gene Name	PRR13
Gene Alias	DKFZp564J157, FLJ23818, TXR1
Gene Description	proline rich 13
Omim ID	610459
Gene Ontology	Hyperlink
Other Designations	taxane-resistance protein