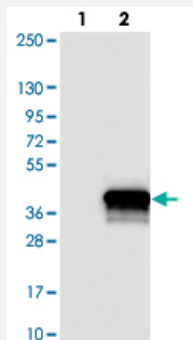


# C1orf35 polyclonal antibody

Catalog # PAB24477      Size 100 uL

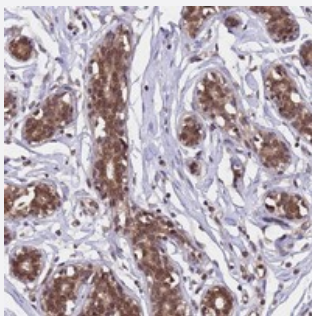
## Applications



### Western Blot (Transfected lysate)

Western blot analysis of Lane 1: Negative control (vector only transfected HEK293T lysate).

Lane 2: Over-expression lysate (Co-expressed with a C-terminal myc-DDK tag (~3.1 kDa) in mammalian HEK293T cells with C1orf35 polyclonal antibody (Cat # PAB24477).



### Immunohistochemistry (Formalin/PFA-fixed paraffin-embedded sections)

Immunohistochemical staining of human breast with C1orf35 polyclonal antibody (Cat # PAB24477) shows moderate cytoplasmic and nuclear positivity in glandular cell at 1:500-1:1000 dilution.

## Specification

<b>Product Description</b>	Rabbit polyclonal antibody raised against recombinant C1orf35.
<b>Immunogen</b>	Recombinant protein corresponding to amino acids of human C1orf35.
<b>Sequence</b>	MFGSSRGGVRRGGQDQFNWEDVKTDKQRENYLGNLSMAPVGRWQKGRDLTWYAKGRAPCAGP SREEELAAREAREALLAALGYKNVKK
<b>Host</b>	Rabbit
<b>Reactivity</b>	Human
<b>Form</b>	Liquid

Purification	Antigen affinity purification
Isotype	IgG
Recommend Usage	Immunohistochemistry (1:500-1:1000) The optimal working dilution should be determined by the end user.
Storage Buffer	In PBS, pH 7.2 (40% glycerol, 0.02% sodium azide)
Storage Instruction	Store at 4°C. For long term storage store at -20°C. Aliquot to avoid repeated freezing and thawing.
Note	This product contains sodium azide: a POISONOUS AND HAZARDOUS SUBSTANCE which should be handled by trained staff only.

## Applications

- Western Blot (Transfected lysate)

Western blot analysis of Lane 1: Negative control (vector only transfected HEK293T lysate).

Lane 2: Over-expression lysate (Co-expressed with a C-terminal myc-DDK tag (~3.1 kDa) in mammalian HEK293T cells with C1orf35 polyclonal antibody (Cat # PAB24477).

- Immunohistochemistry (Formalin/PFA-fixed paraffin-embedded sections)

Immunohistochemical staining of human breast with C1orf35 polyclonal antibody (Cat # PAB24477) shows moderate cytoplasmic and nuclear positivity in glandular cell at 1:500-1:1000 dilution.

## Gene Info — C1orf35

Entrez GeneID	<a href="#">79169</a>
Protein Accession#	<a href="#">Q9BU76</a>
Gene Name	C1orf35
Gene Alias	MGC4174, MMTAG2
Gene Description	chromosome 1 open reading frame 35
Gene Ontology	<a href="#">Hyperlink</a>
Other Designations	OTTHUMP00000035918 hypothetical protein LOC79169 multiple myeloma transforming 2