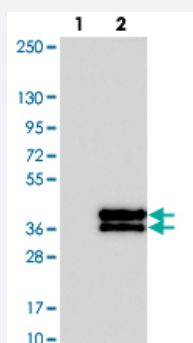


KIF25 polyclonal antibody

Catalog # PAB24475 Size 100 uL

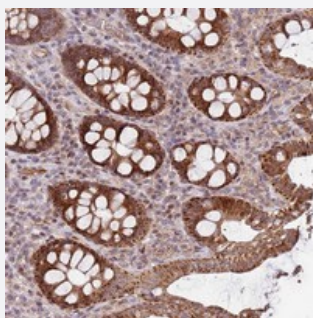
Applications



Western Blot (Transfected lysate)

Western blot analysis of Lane 1: Negative control (vector only transfected HEK293T lysate).

Lane 2: Over-expression lysate (Co-expressed with a C-terminal myc-DDK tag (~3.1 kDa) in mammalian HEK293T cells with KIF25 polyclonal antibody (Cat # PAB24475).



Immunohistochemistry (Formalin/PFA-fixed paraffin-embedded sections)

Immunohistochemical staining of human colon with KIF25 polyclonal antibody (Cat # PAB24475) shows strong cytoplasmic positivity in glandular cells.

Specification

Product Description	Rabbit polyclonal antibody raised against recombinant KIF25.
Immunogen	Recombinant protein corresponding to amino acids of human KIF25.
Sequence	ITVTLTTASCSDSTADQACSATLPREQTEAGRAGRSRRASQGALAPQLVPGNPAGHAEQVQARLQLVDS
Host	Rabbit
Reactivity	Human
Form	Liquid

Purification	Antigen affinity purification
Isotype	IgG
Recommend Usage	Immunohistochemistry (1:200-1:500) The optimal working dilution should be determined by the end user.
Storage Buffer	In PBS, pH 7.2 (40% glycerol, 0.02% sodium azide)
Storage Instruction	Store at 4°C. For long term storage store at -20°C. Aliquot to avoid repeated freezing and thawing.
Note	This product contains sodium azide: a POISONOUS AND HAZARDOUS SUBSTANCE which should be handled by trained staff only.

Applications

- Western Blot (Transfected lysate)

Western blot analysis of Lane 1: Negative control (vector only transfected HEK293T lysate).

Lane 2: Over-expression lysate (Co-expressed with a C-terminal myc-DDK tag (~3.1 kDa) in mammalian HEK293T cells with KIF25 polyclonal antibody (Cat # PAB24475).

- Immunohistochemistry (Formalin/PFA-fixed paraffin-embedded sections)

Immunohistochemical staining of human colon with KIF25 polyclonal antibody (Cat # PAB24475) shows strong cytoplasmic positivity in glandular cells.

Gene Info — KIF25

Entrez GeneID	3834
Protein Accession#	Q9UIL4
Gene Name	KIF25
Gene Alias	KNSL3, MGC163361
Gene Description	kinesin family member 25
Omim ID	603815
Gene Ontology	Hyperlink

Gene Summary

The protein encoded by this gene is a member of the kinesin-like protein family. Protein family members are microtubule-dependent molecular motors that transport organelles within cells and move chromosomes during cell division. However, the particular function of this gene product has not yet been determined. Two alternatively spliced transcript variants which encode products have been described. Other splice variants have been found that lack exon 2 and the initiation codon for translation. [provided by RefSeq]

Other Designations

OTTHUMP00000017650|kinesin-like 3