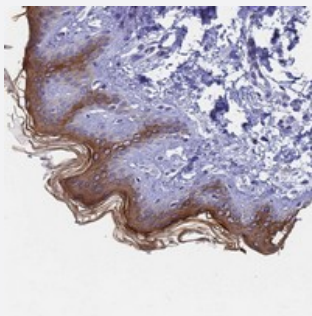


# KRT77 polyclonal antibody

Catalog # PAB24463      Size 100 uL

## Applications



### Immunohistochemistry (Formalin/PFA-fixed paraffin-embedded sections)

Immunohistochemical staining of human skin with KRT77 polyclonal antibody (Cat # PAB24463) shows distinct cytoplasmic positivity in superficial squamous epithelia at 1:200-1:500 dilution.

## Specification

<b>Product Description</b>	Rabbit polyclonal antibody raised against recombinant KRT77.
<b>Immunogen</b>	Recombinant protein corresponding to amino acids of human KRT77.
<b>Sequence</b>	SAGSGGGSPAVGSVCYARGRCGGGGYGIHGRGFGSRS
<b>Host</b>	Rabbit
<b>Reactivity</b>	Human
<b>Form</b>	Liquid
<b>Purification</b>	Antigen affinity purification
<b>Isotype</b>	IgG
<b>Recommend Usage</b>	Immunohistochemistry (1:200-1:500) The optimal working dilution should be determined by the end user.
<b>Storage Buffer</b>	In PBS, pH 7.2 (40% glycerol, 0.02% sodium azide)
<b>Storage Instruction</b>	Store at 4°C. For long term storage store at -20°C. Aliquot to avoid repeated freezing and thawing.

**Note**

This product contains sodium azide: a POISONOUS AND HAZARDOUS SUBSTANCE which should be handled by trained staff only.

## Applications

- Immunohistochemistry (Formalin/PFA-fixed paraffin-embedded sections)

Immunohistochemical staining of human skin with KRT77 polyclonal antibody (Cat # PAB24463) shows distinct cytoplasmic positivity in superficial squamous epithelia at 1:200-1:500 dilution.

## Gene Info — KRT77

**Entrez GeneID** [374454](#)

**Protein Accession#** [Q7Z794](#)

**Gene Name** KRT77

**Gene Alias** K1B, KRT1B, MGC148087

**Gene Description** keratin 77

**Omim ID** [611158](#)

**Gene Ontology** [Hyperlink](#)

**Gene Summary** Keratins are intermediate filament proteins responsible for the structural integrity of epithelial cells and are subdivided into epithelial keratins and hair keratins. This gene encodes an epithelial keratin that is expressed in the skin and eccrine sweat glands. The type II keratins are clustered in a region of chromosome 12q13

**Other Designations** keratin 1B