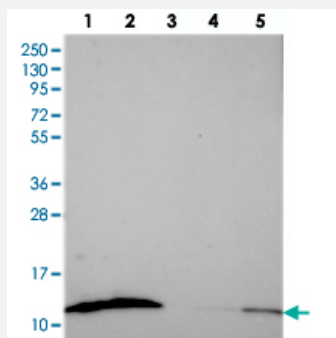


S100A16 polyclonal antibody

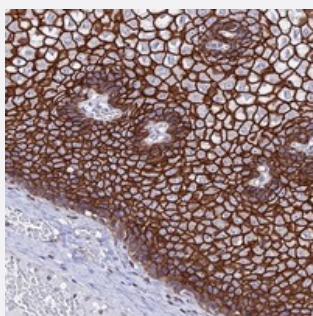
Catalog # PAB24453 Size 100 uL

Applications



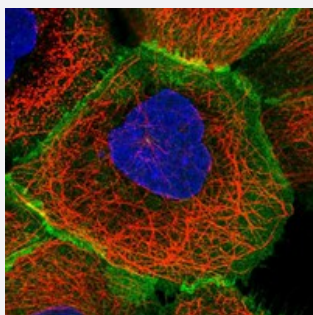
Western Blot

Western blot analysis of Lane 1: RT-4, Lane 2: U-251 MG, Lane 3: Human Plasma, Lane 4: Liver, Lane 5: Tonsil with S100A16 polyclonal antibody (Cat # PAB24453) at 1:250-1:500 dilution.



Immunohistochemistry (Formalin/PFA-fixed paraffin-embedded sections)

Immunohistochemical staining of human esophagus with S100A16 polyclonal antibody (Cat # PAB24453) shows strong cytoplasmic and membranous positivity in squamous epithelial cells at 1:1000-1:2500 dilution.



Immunofluorescence

Immunofluorescent staining of human cell line A-431 with S100A16 polyclonal antibody (Cat # PAB24453) at 1-4 ug/mL dilution shows positivity in plasma membrane and cytoplasm.

Specification

Product Description

Rabbit polyclonal antibody raised against recombinant S100A16.

Immunogen

Recombinant protein corresponding to amino acids of human S100A16.

Sequence	VIVLVENFYKYVSKYSLVKNKISKSSFREMLQKELNHMLSDTGNRKAADKLIQNLDANHDGRISFD EYWTLIGGITGPIAKLIHEQEQ
Host	Rabbit
Reactivity	Human
Form	Liquid
Purification	Antigen affinity purification
Isotype	IgG
Recommend Usage	Immunohistochemistry (1:1000-1:2500) Western Blot (1:250-1:500) Immunofluorescence (1-4 ug/mL) The optimal working dilution should be determined by the end user.
Storage Buffer	In PBS, pH 7.2 (40% glycerol, 0.02% sodium azide)
Storage Instruction	Store at 4°C. For long term storage store at -20°C. Aliquot to avoid repeated freezing and thawing.
Note	This product contains sodium azide: a POISONOUS AND HAZARDOUS SUBSTANCE which should be handled by trained staff only.

Applications

- Western Blot

Western blot analysis of Lane 1: RT-4, Lane 2: U-251 MG, Lane 3: Human Plasma, Lane 4: Liver, Lane 5: Tonsil with S100A16 polyclonal antibody (Cat # PAB24453) at 1:250-1:500 dilution.

- Immunohistochemistry (Formalin/PFA-fixed paraffin-embedded sections)

Immunohistochemical staining of human esophagus with S100A16 polyclonal antibody (Cat # PAB24453) shows strong cytoplasmic and membranous positivity in squamous epithelial cells at 1:1000-1:2500 dilution.

- Immunofluorescence

Immunofluorescent staining of human cell line A-431 with S100A16 polyclonal antibody (Cat # PAB24453) at 1-4 ug/mL dilution shows positivity in plasma membrane and cytoplasm.

Gene Info — S100A16

Entrez GeneID [140576](#)

Protein Accession# [Q96FQ6](#)

Gene Name	S100A16
Gene Alias	AAG13, DT1P1A7, MGC17528, S100F
Gene Description	S100 calcium binding protein A16
Gene Ontology	Hyperlink
Other Designations	OTTHUMP00000015465 OTTHUMP00000015466 OTTHUMP00000032893 OTTHUMP00000032894 aging-associated protein 13