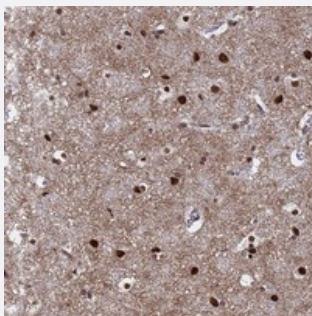


# RAVER2 polyclonal antibody

Catalog # PAB24448      Size 100 uL

## Applications



### Immunohistochemistry (Formalin/PFA-fixed paraffin-embedded sections)

Immunohistochemical staining of human cerebral cortex with RAVR2 polyclonal antibody (Cat # PAB24448) shows strong nuclear positivity in neuronal cells and glial cells at 1:50-1:200 dilution.

## Specification

<b>Product Description</b>	Rabbit polyclonal antibody raised against recombinant RAVR2.
<b>Immunogen</b>	Recombinant protein corresponding to amino acids of human RAVR2.
<b>Sequence</b>	SPASKTTLHKTGIASSILDAISQGSESQHALEKCIAYSPFPGDYAQVSSLRNEKRGSSYLISAPEGG SVECVDQHSQGTG
<b>Host</b>	Rabbit
<b>Reactivity</b>	Human
<b>Form</b>	Liquid
<b>Purification</b>	Antigen affinity purification
<b>Isotype</b>	IgG
<b>Recommend Usage</b>	Immunohistochemistry (1:50-1:200) The optimal working dilution should be determined by the end user.
<b>Storage Buffer</b>	In PBS, pH 7.2 (40% glycerol, 0.02% sodium azide)

**Storage Instruction**

Store at 4°C. For long term storage store at -20°C.  
Aliquot to avoid repeated freezing and thawing.

**Note**

This product contains sodium azide: a POISONOUS AND HAZARDOUS SUBSTANCE which should be handled by trained staff only.

## Applications

- Immunohistochemistry (Formalin/PFA-fixed paraffin-embedded sections)

Immunohistochemical staining of human cerebral cortex with RAVR2 polyclonal antibody (Cat # PAB24448) shows strong nuclear positivity in neuronal cells and glial cells at 1:50-1:200 dilution.

## Gene Info — RAVR2

**Entrez GeneID** [55225](#)

**Protein Accession#** [Q9HCJ3](#)

**Gene Name** RAVR2

**Gene Alias** DKFZp762D1011, FLJ10770, KIAA1579

**Gene Description** ribonucleoprotein, PTB-binding 2

**Omim ID** [609953](#)

**Gene Ontology** [Hyperlink](#)

**Gene Summary** O

**Other Designations** OTTHUMP00000010677