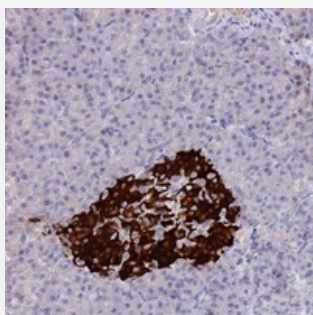


CCDC36 polyclonal antibody

Catalog # PAB24441

Size 100 uL

Applications



Immunohistochemistry (Formalin/PFA-fixed paraffin-embedded sections)

Immunohistochemical staining of human pancreas with CCDC36 polyclonal antibody (Cat # PAB24441) shows strong cytoplasmic positivity in islets of Langerhans.

Specification

Product Description	Rabbit polyclonal antibody raised against recombinant CCDC36.
Immunogen	Recombinant protein corresponding to amino acids of human CCDC36.
Sequence	GEFIEMKSNLKHLEVLVAQQSQEFQQLCEQLGQLNVPSVLAELKRLISVPPVKDSASQTSPPLAQ SLNLTRQEKYTSEKPV LWQAQALPAAWNPGMGS LQ
Host	Rabbit
Reactivity	Human
Form	Liquid
Purification	Antigen affinity purification
Isotype	IgG
Recommend Usage	Immunohistochemistry (1:20-1:50) The optimal working dilution should be determined by the end user.
Storage Buffer	In PBS, pH 7.2 (40% glycerol, 0.02% sodium azide)

Storage Instruction

Store at 4°C. For long term storage store at -20°C.
Aliquot to avoid repeated freezing and thawing.

Note

This product contains sodium azide: a POISONOUS AND HAZARDOUS SUBSTANCE which should be handled by trained staff only.

Applications

- Immunohistochemistry (Formalin/PFA-fixed paraffin-embedded sections)

Immunohistochemical staining of human pancreas with CCDC36 polyclonal antibody (Cat # PAB24441) shows strong cytoplasmic positivity in islets of Langerhans.

Gene Info — CCDC36

Entrez GeneID[339834](#)**Protein Accession#**[Q8IYA8](#)**Gene Name**

CCDC36

Gene Alias

FLJ25320

Gene Description

coiled-coil domain containing 36

Gene Ontology[Hyperlink](#)**Other Designations**

-