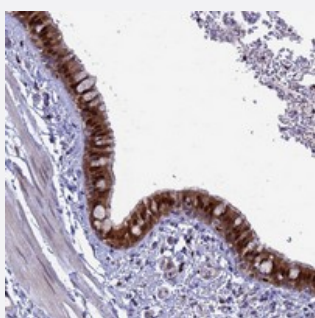


SLC25A37 polyclonal antibody

Catalog # PAB24440

Size 100 uL

Applications



Immunohistochemistry (Formalin/PFA-fixed paraffin-embedded sections)

Immunohistochemical staining of human bronchus with SLC25A37 polyclonal antibody (Cat # PAB24440) shows strong cytoplasmic, membranous and nuclear positivity in respiratory epithelial cells at 1:200-1:500 dilution.

Specification

Product Description	Rabbit polyclonal antibody raised against recombinant SLC25A37.
Immunogen	Recombinant protein corresponding to amino acids of human SLC25A37.
Sequence	ARRMDGDSRDGGGGKDATGSEDYENLPTSASV
Host	Rabbit
Reactivity	Human
Form	Liquid
Purification	Antigen affinity purification
Isotype	IgG
Recommend Usage	Immunohistochemistry (1:200-1:500) The optimal working dilution should be determined by the end user.
Storage Buffer	In PBS, pH 7.2 (40% glycerol, 0.02% sodium azide)
Storage Instruction	Store at 4°C. For long term storage store at -20°C. Aliquot to avoid repeated freezing and thawing.

Note

This product contains sodium azide: a POISONOUS AND HAZARDOUS SUBSTANCE which should be handled by trained staff only.

Applications

- Immunohistochemistry (Formalin/PFA-fixed paraffin-embedded sections)

Immunohistochemical staining of human bronchus with SLC25A37 polyclonal antibody (Cat # PAB24440) shows strong cytoplasmic, membranous and nuclear positivity in respiratory epithelial cells at 1:200-1:500 dilution.

Gene Info — SLC25A37

Entrez GeneID [51312](#)

Protein Accession# [Q9NYZ2](#)

Gene Name SLC25A37

Gene Alias HT015, MFRN, MSC, MSCP, PRO1278, PRO1584, PRO2217

Gene Description solute carrier family 25, member 37

Omim ID [610387](#)

Gene Ontology [Hyperlink](#)

Gene Summary SLC25A37 belongs to the SLC25 family of mitochondrial carrier proteins (Haitina et al., 2006 [PubMed 16949250]).[supplied by OMIM]

Other Designations mitochondrial solute carrier protein|mitoferrin|predicted protein of HQ2217