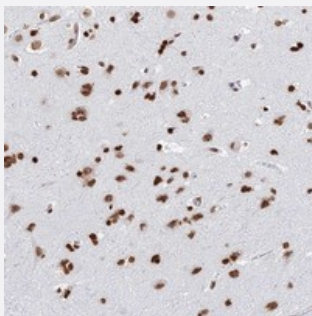


GBP3 polyclonal antibody

Catalog # PAB24438 Size 100 uL

Applications



Immunohistochemistry (Formalin/PFA-fixed paraffin-embedded sections)

Immunohistochemical staining of human cerebral cortex with GBP3 polyclonal antibody (Cat # PAB24438) shows strong nuclear positivity in glial cells at 1:1000-1:2500 dilution.

Specification

Product Description	Rabbit polyclonal antibody raised against recombinant GBP3.
Immunogen	Recombinant protein corresponding to amino acids of human GBP3.
Sequence	LLEEQEKLTSLQEQARVLKERCQGESTQLQNEIQKLQKTLKKKTKRYMSHK
Host	Rabbit
Reactivity	Human
Form	Liquid
Purification	Antigen affinity purification
Isotype	IgG
Recommend Usage	Immunohistochemistry (1:1000-1:2500) The optimal working dilution should be determined by the end user.
Storage Buffer	In PBS, pH 7.2 (40% glycerol, 0.02% sodium azide)
Storage Instruction	Store at 4°C. For long term storage store at -20°C. Aliquot to avoid repeated freezing and thawing.

Note

This product contains sodium azide: a POISONOUS AND HAZARDOUS SUBSTANCE which should be handled by trained staff only.

Applications

- Immunohistochemistry (Formalin/PFA-fixed paraffin-embedded sections)

Immunohistochemical staining of human cerebral cortex with GBP3 polyclonal antibody (Cat # PAB24438) shows strong nuclear positivity in glial cells at 1:1000-1:2500 dilution.

Gene Info — GBP3

Entrez GeneID	2635
---------------	----------------------

Protein Accession#	Q9H0R5
--------------------	------------------------

Gene Name	GBP3
-----------	------

Gene Alias	DKFZp686E0974, DKFZp686L15228, FLJ10961
------------	---

Gene Description	guanylate binding protein 3
------------------	-----------------------------

Omim ID	600413
---------	------------------------

Gene Ontology	Hyperlink
---------------	---------------------------

Gene Summary	This gene encodes a member of the guanylate-binding protein (GBP) family. GBPs specifically bind guanine nucleotides (GMP, GDP, and GTP) and contain two of the three consensus motifs found in typical GTP-binding proteins. The encoded protein interacts with a member of the germinal center kinase family. [provided by RefSeq]
--------------	--

Other Designations	-
--------------------	---