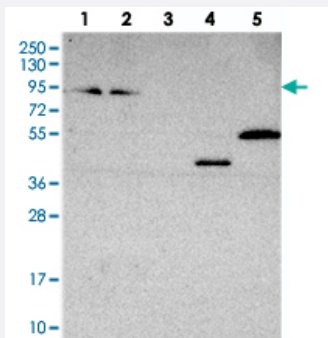


ZNF235 polyclonal antibody

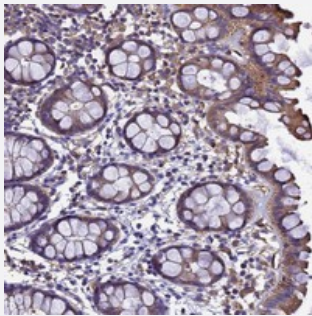
Catalog # PAB24428 Size 100 uL

Applications



Western Blot

Western blot analysis of Lane 1: RT-4, Lane 2: U-251 MG, Lane 3: Human Plasma, Lane 4: Liver, Lane 5: Tonsil with ZNF235 polyclonal antibody (Cat # PAB24428) at 1:250-1:500 dilution.



Immunohistochemistry (Formalin/PFA-fixed paraffin-embedded sections)

Immunohistochemical staining of human rectum with ZNF235 polyclonal antibody (Cat # PAB24428) shows moderate cytoplasmic positivity in glandular cells at 1:50-1:200 dilution.

Specification

Product Description	Rabbit polyclonal antibody raised against recombinant ZNF235.
Immunogen	Recombinant protein corresponding to amino acids of human ZNF235.
Sequence	ASVDDNCLVNHIGDHSSIENQEFPTGKVPNSWSKMYLNETQNYQRSCKQTQMKNKLCIFAPYVDIFSCISHHH
Host	Rabbit
Reactivity	Human
Form	Liquid

Purification	Antigen affinity purification
Isotype	IgG
Recommend Usage	Immunohistochemistry (1:50-1:200) Western Blot (1:250-1:500) The optimal working dilution should be determined by the end user.
Storage Buffer	In PBS, pH 7.2 (40% glycerol, 0.02% sodium azide)
Storage Instruction	Store at 4°C. For long term storage store at -20°C. Aliquot to avoid repeated freezing and thawing.
Note	This product contains sodium azide: a POISONOUS AND HAZARDOUS SUBSTANCE which should be handled by trained staff only.

Applications

- Western Blot

Western blot analysis of Lane 1: RT-4, Lane 2: U-251 MG, Lane 3: Human Plasma, Lane 4: Liver, Lane 5: Tonsil with ZNF235 polyclonal antibody (Cat # PAB24428) at 1:250-1:500 dilution.

- Immunohistochemistry (Formalin/PFA-fixed paraffin-embedded sections)

Immunohistochemical staining of human rectum with ZNF235 polyclonal antibody (Cat # PAB24428) shows moderate cytoplasmic positivity in glandular cells at 1:50-1:200 dilution.

Gene Info — ZNF235

Entrez GeneID	9310
Protein Accession#	Q14590
Gene Name	ZNF235
Gene Alias	ANF270, HZF6, ZFP93, ZNF270
Gene Description	zinc finger protein 235
Omim ID	604749
Gene Ontology	Hyperlink

Gene Summary

This gene product belongs to the zinc finger protein superfamily, members of which are regulatory proteins characterized by nucleic acid-binding zinc finger domains. The encoded protein is a member of the Kruppel family of zinc finger proteins, and contains Kruppel-associated box (KRAB) A and B domains and 15 tandemly arrayed C2H2-type zinc fingers. It is an ortholog of the mouse Zfp93 protein. This gene is located in a cluster of zinc finger genes on 19q13.2. [provided by RefSeq]

Other Designations

zinc finger protein 93 homolog|zinc finger protein homologous to Zfp93 in mouse|zinc finger protein homologous to mouse Zfp93