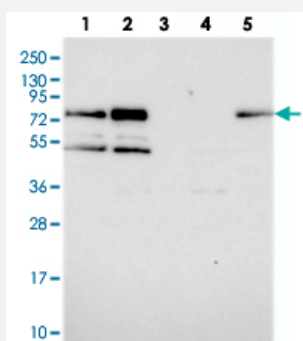


# APBA3 polyclonal antibody

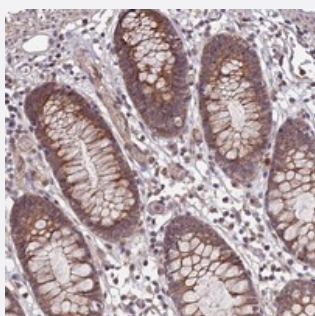
Catalog # PAB24427      Size 100 uL

## Applications



### Western Blot

Western blot analysis of Lane 1: RT-4, Lane 2: U-251 MG, Lane 3: Human Plasma, Lane 4: Liver, Lane 5: Tonsil with APBA3 polyclonal antibody (Cat # PAB24427) at 1:250-1:500 dilution.



### Immunohistochemistry (Formalin/PFA-fixed paraffin-embedded sections)

Immunohistochemical staining of human colon with APBA3 polyclonal antibody (Cat # PAB24427) shows moderate cytoplasmic positivity in glandular cells at 1:200-1:500 dilution.

## Specification

Product Description	Rabbit polyclonal antibody raised against recombinant APBA3.
Immunogen	Recombinant protein corresponding to amino acids of human APBA3.
Sequence	QFEALPGDLVGPSPGGAPCPLHIATGHGLASQEIADAHGLLSAEAGRDDLGLLHCEECPPSQT GPEEPLEPAPRLQ
Host	Rabbit
Reactivity	Human
Form	Liquid

Purification	Antigen affinity purification
Isotype	IgG
Recommend Usage	Immunohistochemistry (1:200-1:500) Western Blot (1:250-1:500) The optimal working dilution should be determined by the end user.
Storage Buffer	In PBS, pH 7.2 (40% glycerol, 0.02% sodium azide)
Storage Instruction	Store at 4°C. For long term storage store at -20°C. Aliquot to avoid repeated freezing and thawing.
Note	This product contains sodium azide: a POISONOUS AND HAZARDOUS SUBSTANCE which should be handled by trained staff only.

## Applications

- Western Blot

Western blot analysis of Lane 1: RT-4, Lane 2: U-251 MG, Lane 3: Human Plasma, Lane 4: Liver, Lane 5: Tonsil with APBA3 polyclonal antibody (Cat # PAB24427) at 1:250-1:500 dilution.

- Immunohistochemistry (Formalin/PFA-fixed paraffin-embedded sections)

Immunohistochemical staining of human colon with APBA3 polyclonal antibody (Cat # PAB24427) shows moderate cytoplasmic positivity in glandular cells at 1:200-1:500 dilution.

## Gene Info — APBA3

Entrez GeneID	<a href="#">9546</a>
Protein Accession#	<a href="#">O96018</a>
Gene Name	APBA3
Gene Alias	MGC:15815, X11L2, mint3
Gene Description	amyloid beta (A4) precursor protein-binding, family A, member 3
Omim ID	<a href="#">604262</a>
Gene Ontology	<a href="#">Hyperlink</a>
Gene Summary	The protein encoded by this gene is a member of the X11 protein family. It is an adapter protein that interacts with the Alzheimer's disease amyloid precursor protein. This gene product is believed to be involved in signal transduction processes. This gene is a candidate gene for Alzheimer's disease. [provided by RefSeq]

**Other Designations**

X11-like 2 protein|adapter protein X11gamma|amyloid beta (A4) precursor protein-binding, family A, member 3 (X11-like 2)|neuron-specific X11L2 protein|neuronal munc18-1-interacting protein 3|phosphotyrosine-binding/-interacting domain (PTB)-bearing protei

**Disease**

- [Genetic Predisposition to Disease](#)
- [Narcolepsy](#)