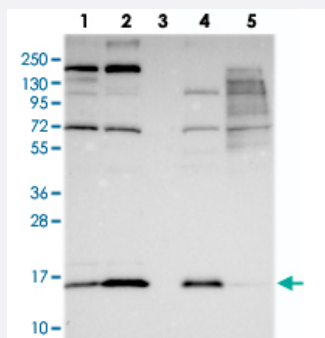


COX20 polyclonal antibody

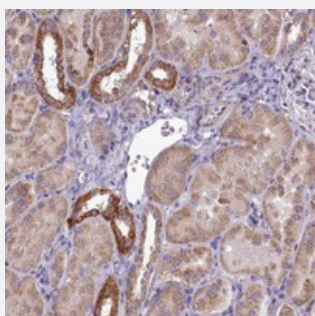
Catalog # PAB24419 Size 100 uL

Applications



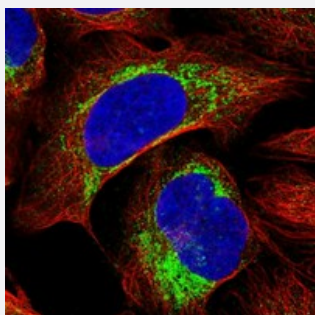
Western Blot

Western blot analysis of Lane 1: RT-4, Lane 2: U-251 MG, Lane 3: Human Plasma, Lane 4: Liver, Lane 5: Tonsil with COX20 polyclonal antibody (Cat # PAB24419) at 1:250-1:500 dilution.



Immunohistochemistry (Formalin/PFA-fixed paraffin-embedded sections)

Immunohistochemical staining of human kidney with COX20 polyclonal antibody (Cat # PAB24419) shows strong cytoplasmic positivity in subset of renal tubules at 1:50-1:200 dilution.



Immunofluorescence

Immunofluorescent staining of human cell line U-2 OS with COX20 polyclonal antibody (Cat # PAB24419) at 1-4 ug/mL dilution shows positivity in mitochondria.

Specification

Product Description

Rabbit polyclonal antibody raised against recombinant COX20.

Immunogen

Recombinant protein corresponding to amino acids of human COX20.

Sequence	YNYAKQRIQERIAREEIKKKILYEGTHLDPERKHNGSSSN
Host	Rabbit
Reactivity	Human
Form	Liquid
Purification	Antigen affinity purification
Isotype	IgG
Recommend Usage	Immunohistochemistry (1:50-1:200) Western Blot (1:250-1:500) Immunofluorescence (1-4 ug/mL) The optimal working dilution should be determined by the end user.
Storage Buffer	In PBS, pH 7.2 (40% glycerol, 0.02% sodium azide)
Storage Instruction	Store at 4°C. For long term storage store at -20°C. Aliquot to avoid repeated freezing and thawing.
Note	This product contains sodium azide: a POISONOUS AND HAZARDOUS SUBSTANCE which should be handled by trained staff only.

Applications

- Western Blot

Western blot analysis of Lane 1: RT-4, Lane 2: U-251 MG, Lane 3: Human Plasma, Lane 4: Liver, Lane 5: Tonsil with COX20 polyclonal antibody (Cat # PAB24419) at 1:250-1:500 dilution.

- Immunohistochemistry (Formalin/PFA-fixed paraffin-embedded sections)

Immunohistochemical staining of human kidney with COX20 polyclonal antibody (Cat # PAB24419) shows strong cytoplasmic positivity in subset of renal tubules at 1:50-1:200 dilution.

- Immunofluorescence

Immunofluorescent staining of human cell line U-2 OS with COX20 polyclonal antibody (Cat # PAB24419) at 1-4 ug/mL dilution shows positivity in mitochondria.

Gene Info — COX20

Entrez GeneID [116228](#)

Protein Accession# [Q5RI15](#)

Gene Name	COX20
Gene Alias	FAM36A
Gene Description	COX20 Cox2 chaperone homolog (S. cerevisiae)
Gene Ontology	Hyperlink
Gene Summary	cytochrome c oxidase protein 20 homolog; family with sequence similarity 36
Other Designations	cytochrome c oxidase protein 20 homolog; family with sequence similarity 36, member A; protein FAM36A