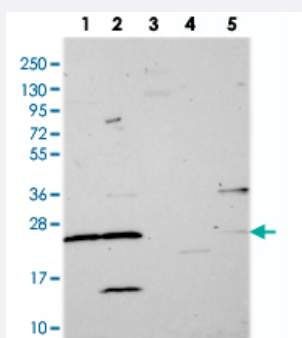


MRPS26 polyclonal antibody

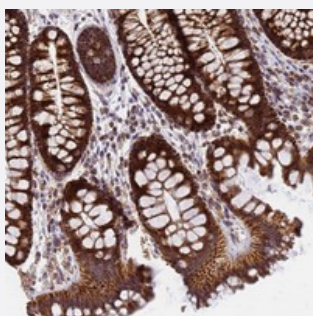
Catalog # PAB24417 Size 100 uL

Applications



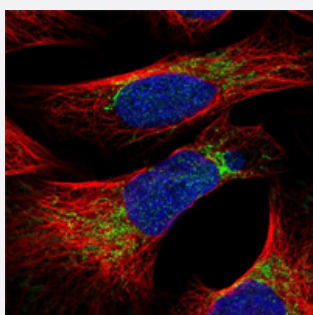
Western Blot

Western blot analysis of Lane 1: RT-4, Lane 2: U-251 MG, Lane 3: Human Plasma, Lane 4: Liver, Lane 5: Tonsil with MRPS26 polyclonal antibody (Cat # PAB24417) at 1:250-1:500 dilution.



Immunohistochemistry (Formalin/PFA-fixed paraffin-embedded sections)

Immunohistochemical staining of human colon with MRPS26 polyclonal antibody (Cat # PAB24417) shows strong granular cytoplasmic positivity in glandular cells at 1:200-1:500 dilution.



Immunofluorescence

Immunofluorescent staining of human cell line U-2 OS shows positivity in mitochondria.

Using MRPS26 polyclonal antibody (Cat # PAB24417).

Specification

Product Description

Rabbit polyclonal antibody raised against recombinant MRPS26.

Immunogen

Recombinant protein corresponding to amino acids of human MRPS26.

Sequence	EVLQLQEEVKNFITRENLEARVEAALDSRKNYNWAITREGLVVRPQRRDS
Host	Rabbit
Reactivity	Human
Form	Liquid
Purification	Antigen affinity purification
Isotype	IgG
Recommend Usage	Immunohistochemistry (1:200-1:500) Western Blot (1:250-1:500) The optimal working dilution should be determined by the end user.
Storage Buffer	In PBS, pH 7.2 (40% glycerol, 0.02% sodium azide)
Storage Instruction	Store at 4°C. For long term storage store at -20°C. Aliquot to avoid repeated freezing and thawing.
Note	This product contains sodium azide: a POISONOUS AND HAZARDOUS SUBSTANCE which should be handled by trained staff only.

Applications

- Western Blot

Western blot analysis of Lane 1: RT-4, Lane 2: U-251 MG, Lane 3: Human Plasma, Lane 4: Liver, Lane 5: Tonsil with MRPS26 polyclonal antibody (Cat # PAB24417) at 1:250-1:500 dilution.

- Immunohistochemistry (Formalin/PFA-fixed paraffin-embedded sections)

Immunohistochemical staining of human colon with MRPS26 polyclonal antibody (Cat # PAB24417) shows strong granular cytoplasmic positivity in glandular cells at 1:200-1:500 dilution.

- Immunofluorescence

Immunofluorescent staining of human cell line U-2 OS shows positivity in mitochondria.
Using MRPS26 polyclonal antibody (Cat # PAB24417).

Gene Info — MRPS26

Entrez GeneID	64949
Protein Accession#	Q9BYN8
Gene Name	MRPS26

Gene Alias	C20orf193, GI008, MRP-S13, MRP-S26, MRPS13, NY-BR-87, RPMS13, dJ534B8.3
Gene Description	mitochondrial ribosomal protein S26
Gene Ontology	Hyperlink
Gene Summary	<p>Mammalian mitochondrial ribosomal proteins are encoded by nuclear genes and help in protein synthesis within the mitochondrion. Mitochondrial ribosomes (mitoribosomes) consist of a small 28S subunit and a large 39S subunit. They have an estimated 75% protein to rRNA composition compared to prokaryotic ribosomes, where this ratio is reversed. Another difference between mammalian mitoribosomes and prokaryotic ribosomes is that the latter contain a 5S rRNA. Among different species, the proteins comprising the mitoribosome differ greatly in sequence, and sometimes in biochemical properties, which prevents easy recognition by sequence homology. This gene encodes a 28S subunit protein. This gene lies adjacent to and downstream of the gonadotropin-releasing hormone precursor gene. [provided by RefSeq]</p>
Other Designations	OTTHUMP00000030073 serologically defined breast cancer antigen NY-BR-87