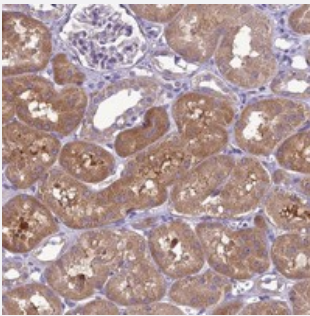


# SCRT1 polyclonal antibody

Catalog # PAB24402      Size 100 uL

## Applications



### Immunohistochemistry (Formalin/PFA-fixed paraffin-embedded sections)

Immunohistochemical staining of human kidney with SCRT1 polyclonal antibody (Cat # PAB24402) shows moderate cytoplasmic positivity in cells in tubules at 1:20-1:50 dilution.

## Specification

<b>Product Description</b>	Rabbit polyclonal antibody raised against recombinant SCRT1.
<b>Immunogen</b>	Recombinant protein corresponding to amino acids of human SCRT1.
<b>Sequence</b>	LHDKGYLSDYVGPSSVYDGDAAEALLKGPSPEPMYAAAVRGELGP
<b>Host</b>	Rabbit
<b>Reactivity</b>	Human
<b>Form</b>	Liquid
<b>Purification</b>	Antigen affinity purification
<b>Isotype</b>	IgG
<b>Recommend Usage</b>	Immunohistochemistry (1:20-1:50) The optimal working dilution should be determined by the end user.
<b>Storage Buffer</b>	In PBS, pH 7.2 (40% glycerol, 0.02% sodium azide)
<b>Storage Instruction</b>	Store at 4°C. For long term storage store at -20°C. Aliquot to avoid repeated freezing and thawing.

**Note**

This product contains sodium azide: a POISONOUS AND HAZARDOUS SUBSTANCE which should be handled by trained staff only.

## Applications

- Immunohistochemistry (Formalin/PFA-fixed paraffin-embedded sections)

Immunohistochemical staining of human kidney with SCRT1 polyclonal antibody (Cat # PAB24402) shows moderate cytoplasmic positivity in cells in tubules at 1:20-1:50 dilution.

## Gene Info — SCRT1

**Entrez GeneID** [83482](#)

**Protein Accession#** [Q9BWW7](#)

**Gene Name** SCRT1

**Gene Alias** DKFZp547F072, SCRT

**Gene Description** scratch homolog 1, zinc finger protein (Drosophila)

**Omim ID** [605858](#)

**Gene Ontology** [Hyperlink](#)

**Gene Summary** This gene is a member of the Snail family of C2H2-type zinc finger transcription factors. It codes for a neural-specific transcriptional repressor that binds to E-box motifs. The protein may promote neural differentiation and may be involved in cancers with neuroendocrine features. [provided by RefSeq]

**Other Designations** scratch|scratch 1