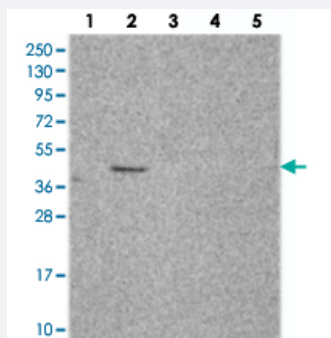


# C2orf69 polyclonal antibody

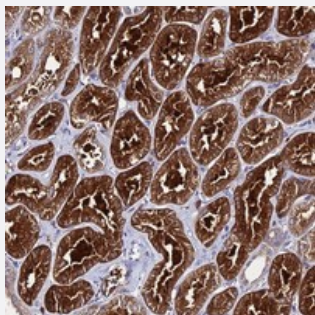
Catalog # PAB24397      Size 100 uL

## Applications



### Western Blot

Western blot analysis of Lane 1: RT-4, Lane 2: U-251 MG, Lane 3: Human Plasma, Lane 4: Liver, Lane 5: Tonsil with C2orf69 polyclonal antibody (Cat # PAB24397).



### Immunohistochemistry (Formalin/PFA-fixed paraffin-embedded sections)

Immunohistochemical staining of human kidney with C2orf69 polyclonal antibody (Cat # PAB24397) shows strong cytoplasmic and extracellular positivity in cells in tubules.

## Specification

|                     |   |
|---------------------|---|
| Product Description | Rabbit polyclonal antibody raised against recombinant C2orf69.                      |
| Immunogen           | Recombinant protein corresponding to amino acids of human C2orf69.                  |
| Sequence            | QHHVLYFPGDVQNYHEIMTRHPENYQWENWSLENVATILAHFRFPNSYMWVIKCSRMHLHKFSCYD<br>NFVKSNMFGAPEH |
| Host                | Rabbit  |
| Reactivity          | Human   |
| Form                | Liquid  |

|                     |   |
|---------------------|---|
| Purification        | Antigen affinity purification   |
| Isotype             | IgG   |
| Recommend Usage     | Immunohistochemistry (1:50-1:200)<br>Western Blot (1:250-1:500)<br>The optimal working dilution should be determined by the end user. |
| Storage Buffer      | In PBS, pH 7.2 (40% glycerol, 0.02% sodium azide)   |
| Storage Instruction | Store at 4°C. For long term storage store at -20°C.<br>Aliquot to avoid repeated freezing and thawing.                                |
| Note                | This product contains sodium azide: a POISONOUS AND HAZARDOUS SUBSTANCE which should be handled by trained staff only.                |

## Applications

- Western Blot

Western blot analysis of Lane 1: RT-4, Lane 2: U-251 MG, Lane 3: Human Plasma, Lane 4: Liver, Lane 5: Tonsil with C2orf69 polyclonal antibody (Cat # PAB24397).

- Immunohistochemistry (Formalin/PFA-fixed paraffin-embedded sections)

Immunohistochemical staining of human kidney with C2orf69 polyclonal antibody (Cat # PAB24397) shows strong cytoplasmic and extracellular positivity in cells in tubules.

## Gene Info — C2orf69

|                    |                                    |
|--------------------|------------------------------------|
| Entrez GeneID      | <a href="#">205327</a>             |
| Protein Accession# | <a href="#">Q8N8R5</a>             |
| Gene Name          | C2orf69                            |
| Gene Alias         | FLJ38973                           |
| Gene Description   | chromosome 2 open reading frame 69 |
| Gene Ontology      | <a href="#">Hyperlink</a>          |
| Other Designations | hypothetical protein LOC205327     |