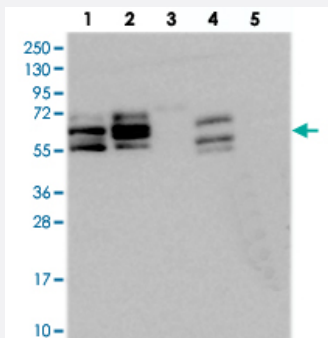


BICC1 polyclonal antibody

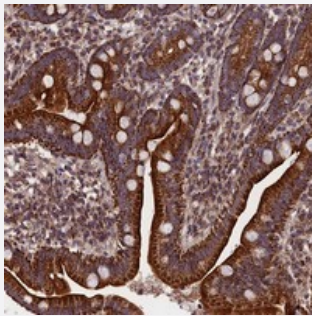
Catalog # PAB24394 Size 100 uL

Applications



Western Blot

Western blot analysis of Lane 1: RT-4, Lane 2: U-251 MG, Lane 3: Human Plasma, Lane 4: Liver, Lane 5: Tonsil with BICC1 polyclonal antibody (Cat # PAB24394) at 1:250-1:500 dilution.



Immunohistochemistry (Formalin/PFA-fixed paraffin-embedded sections)

Immunohistochemical staining of human duodenum with BICC1 polyclonal antibody (Cat # PAB24394) shows strong granular cytoplasmic positivity in glandular cells at 1:50-1:200 dilution.

Specification

Product Description	Rabbit polyclonal antibody raised against recombinant BICC1.
Immunogen	Recombinant protein corresponding to amino acids of human BICC1.
Sequence	NAGDLKQMMCP SKVSCAKRQTVELLQGTKNSHLHSTDRLLSDPELSATESPLADKKAPGSERA AERAAAAQQNSERAHLAPRSSYVNMQAFDYEQKKLLATKAMLLKPKVVTEVRTPTNTWSGLGFS KSMPTAIKELRRA
Host	Rabbit
Reactivity	Human
Form	Liquid

Purification	Antigen affinity purification
Isotype	IgG
Recommend Usage	Immunohistochemistry (1:50-1:200) Western Blot (1:250-1:500) The optimal working dilution should be determined by the end user.
Storage Buffer	In PBS, pH 7.2 (40% glycerol, 0.02% sodium azide)
Storage Instruction	Store at 4°C. For long term storage store at -20°C. Aliquot to avoid repeated freezing and thawing.
Note	This product contains sodium azide: a POISONOUS AND HAZARDOUS SUBSTANCE which should be handled by trained staff only.

Applications

- Western Blot

Western blot analysis of Lane 1: RT-4, Lane 2: U-251 MG, Lane 3: Human Plasma, Lane 4: Liver, Lane 5: Tonsil with BICC1 polyclonal antibody (Cat # PAB24394) at 1:250-1:500 dilution.

- Immunohistochemistry (Formalin/PFA-fixed paraffin-embedded sections)

Immunohistochemical staining of human duodenum with BICC1 polyclonal antibody (Cat # PAB24394) shows strong granular cytoplasmic positivity in glandular cells at 1:50-1:200 dilution.

Gene Info — BICC1

Entrez GeneID	80114
Protein Accession#	Q9H694
Gene Name	BICC1
Gene Alias	-
Gene Description	bicaudal C homolog 1 (Drosophila)
Gene Ontology	Hyperlink
Gene Summary	This gene encodes an RNA-binding protein that is active in regulating gene expression by modulating protein translation during embryonic development. Mouse studies identified the corresponding protein to be under strict control during cell differentiation and to be a maternally provided gene product. [provided by RefSeq]
Other Designations	OTTHUMP00000019636 bicaudal C homolog 1

Disease

- [Alzheimer disease](#)
- [Depressive Disorder](#)
- [Genetic Predisposition to Disease](#)
- [Recurrence](#)
- [Tobacco Use Disorder](#)