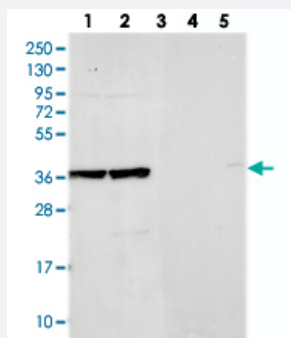


# ACTL6B polyclonal antibody

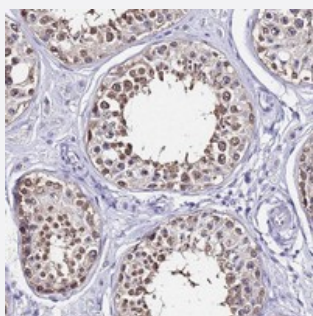
Catalog # PAB24389      Size 100 uL

## Applications



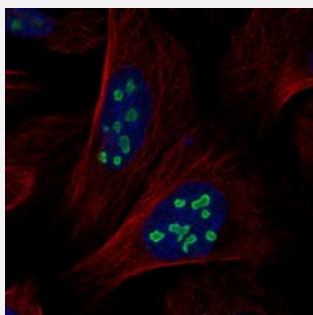
### Western Blot

Western blot analysis of Lane 1: RT-4, Lane 2: U-251 MG, Lane 3: Human Plasma, Lane 4: Liver, Lane 5: Tonsil with ACTL6B polyclonal antibody (Cat # PAB24389) at 1:250-1:500 dilution.



### Immunohistochemistry (Formalin/PFA-fixed paraffin-embedded sections)

Immunohistochemical staining of human testis with ACTL6B polyclonal antibody (Cat # PAB24389) shows moderate cytoplasmic and nuclear positivity in cells in seminiferous ducts at 1:200-1:500 dilution.



### Immunofluorescence

Immunofluorescent staining of human cell line U-2 OS with ACTL6B polyclonal antibody (Cat # PAB24389) at 1-4 ug/mL dilution shows positivity in nucleoli.

## Specification

### Product Description

Rabbit polyclonal antibody raised against recombinant ACTL6B.

### Immunogen

Recombinant protein corresponding to amino acids of human ACTL6B.

Sequence	CPKADFPTTVGLLAAEEGGGLEEGDKEKKGKIFHIDTNALHV
Host	Rabbit
Reactivity	Human
Form	Liquid
Purification	Antigen affinity purification
Isotype	IgG
Recommend Usage	Immunohistochemistry (1:200-1:500) Western Blot (1:250-1:500) Immunofluorescence (1-4 ug/mL) The optimal working dilution should be determined by the end user.
Storage Buffer	In PBS, pH 7.2 (40% glycerol, 0.02% sodium azide)
Storage Instruction	Store at 4°C. For long term storage store at -20°C. Aliquot to avoid repeated freezing and thawing.
Note	This product contains sodium azide: a POISONOUS AND HAZARDOUS SUBSTANCE which should be handled by trained staff only.

## Applications

- Western Blot

Western blot analysis of Lane 1: RT-4, Lane 2: U-251 MG, Lane 3: Human Plasma, Lane 4: Liver, Lane 5: Tonsil with ACTL6B polyclonal antibody (Cat # PAB24389) at 1:250-1:500 dilution.

- Immunohistochemistry (Formalin/PFA-fixed paraffin-embedded sections)

Immunohistochemical staining of human testis with ACTL6B polyclonal antibody (Cat # PAB24389) shows moderate cytoplasmic and nuclear positivity in cells in seminiferous ducts at 1:200-1:500 dilution.

- Immunofluorescence

Immunofluorescent staining of human cell line U-2 OS with ACTL6B polyclonal antibody (Cat # PAB24389) at 1-4 ug/mL dilution shows positivity in nucleoli.

## Gene Info — ACTL6B

Entrez GeneID [51412](#)

Protein Accession# [Q94805](#)

Gene Name	ACTL6B
Gene Alias	ACTL6, BAF53B
Gene Description	actin-like 6B
Gene Ontology	<a href="#">Hyperlink</a>
Gene Summary	<p>The protein encoded by this gene is a member of a family of actin-related proteins (ARPs) which share significant amino acid sequence identity to conventional actins. Both actins and ARPs have an actin fold, which is an ATP-binding cleft, as a common feature. The ARPs are involved in diverse cellular processes, including vesicular transport, spindle orientation, nuclear migration and chromatin remodeling. This gene encodes a subunit of the BAF (BRG1/brm-associated factor) complex in mammals, which is functionally related to SWI/SNF complex in <i>S. cerevisiae</i> and <i>Drosophila</i>; the latter is thought to facilitate transcriptional activation of specific genes by antagonizing chromatin-mediated transcriptional repression. This subunit may be involved in the regulation of genes by structural modulation of their chromatin, specifically in the brain. [provided by RefSeq]</p>
Other Designations	53 kDa BRG1-associated factor B actin-like 6 actin-related protein hArpN alpha

## Disease

- [Cardiovascular Diseases](#)
- [Diabetes Mellitus](#)
- [Edema](#)