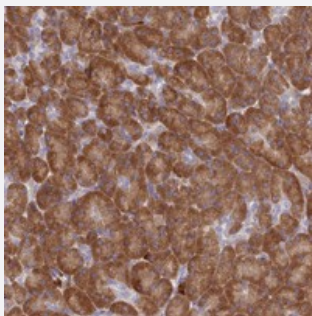


# HM13 polyclonal antibody

Catalog # PAB24385      Size 100 uL

## Applications



### Immunohistochemistry (Formalin/PFA-fixed paraffin-embedded sections)

Immunohistochemical staining of human pancreas with HM13 polyclonal antibody (Cat # PAB24385) shows strong cytoplasmic positivity in exocrine cells at 1:200-1:500 dilution.

## Specification

Product Description	Rabbit polyclonal antibody raised against recombinant HM13.
Immunogen	Recombinant protein corresponding to amino acids of human HM13.
Sequence	PASFPNRQYQLLFTQGSGENKEEIIINYEFDTKDLVCLGLSSIVGVWYLLRKHWIANNLFGLAFSLNG VELLHLNNVSTGC
Host	Rabbit
Reactivity	Human
Form	Liquid
Purification	Antigen affinity purification
Isotype	IgG
Recommend Usage	Immunohistochemistry (1:200-1:500) The optimal working dilution should be determined by the end user.
Storage Buffer	In PBS, pH 7.2 (40% glycerol, 0.02% sodium azide)

**Storage Instruction**

Store at 4°C. For long term storage store at -20°C.  
Aliquot to avoid repeated freezing and thawing.

**Note**

This product contains sodium azide: a POISONOUS AND HAZARDOUS SUBSTANCE which should be handled by trained staff only.

## Applications

- Immunohistochemistry (Formalin/PFA-fixed paraffin-embedded sections)

Immunohistochemical staining of human pancreas with HM13 polyclonal antibody (Cat # PAB24385) shows strong cytoplasmic positivity in exocrine cells at 1:200-1:500 dilution.

## Gene Info — HM13

**Entrez GeneID**[81502](#)**Protein Accession#**[Q8TCT9](#)**Gene Name**

HM13

**Gene Alias**

H13, IMP1, IMPAS, MSTP086, PSENL3, PSL3, SPP, dJ324O17.1

**Gene Description**

histocompatibility (minor) 13

**Omim ID**[607106](#)**Gene Ontology**[Hyperlink](#)**Gene Summary**

The protein encoded by this gene, which localizes to the endoplasmic reticulum, catalyzes intramembrane proteolysis of some signal peptides after they have been cleaved from a preprotein. This activity is required to generate signal sequence-derived human lymphocyte antigen-E epitopes that are recognized by the immune system, and to process hepatitis C virus core protein. The encoded protein is an integral membrane protein with sequence motifs characteristic of the presenilin-type aspartic proteases. Multiple transcript variants encoding several different isoforms have been found for this gene. [provided by RefSeq]

**Other Designations**

OTTHUMP00000030527|OTTHUMP00000030528|intramembrane protease|minor histocompatibility antigen 13|presenilin-like protein 3|signal peptide peptidase beta