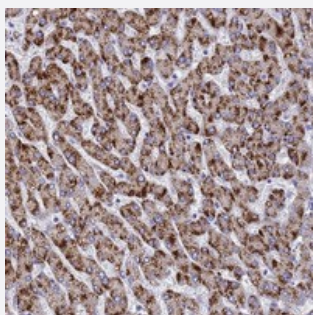


MS4A13 polyclonal antibody

Catalog # PAB24380 Size 100 uL

Applications



Immunohistochemistry (Formalin/PFA-fixed paraffin-embedded sections)

Immunohistochemical staining of human liver with MS4A13 polyclonal antibody (Cat # PAB24380) shows strong cytoplasmic positivity in hepatocytes at 1:10-1:20 dilution.

Specification

Product Description	Rabbit polyclonal antibody raised against recombinant MS4A13.
Immunogen	Recombinant protein corresponding to amino acids of human MS4A13.
Sequence	LTIIELSHFNSVSYRNYGQAKLGREVSRI
Host	Rabbit
Reactivity	Human
Form	Liquid
Purification	Antigen affinity purification
Isotype	IgG
Recommend Usage	Immunohistochemistry (1:10-1:20) The optimal working dilution should be determined by the end user.
Storage Buffer	In PBS, pH 7.2 (40% glycerol, 0.02% sodium azide)
Storage Instruction	Store at 4°C. For long term storage store at -20°C. Aliquot to avoid repeated freezing and thawing.

Note

This product contains sodium azide: a POISONOUS AND HAZARDOUS SUBSTANCE which should be handled by trained staff only.

Applications

- Immunohistochemistry (Formalin/PFA-fixed paraffin-embedded sections)

Immunohistochemical staining of human liver with MS4A13 polyclonal antibody (Cat # PAB24380) shows strong cytoplasmic positivity in hepatocytes at 1:10-1:20 dilution.

Gene Info — MS4A13

Entrez GeneID	503497
---------------	------------------------

Protein Accession#	Q5J8X5
--------------------	------------------------

Gene Name	MS4A13
-----------	--------

Gene Alias	-
------------	---

Gene Description	membrane-spanning 4-domains, subfamily A, member 13
------------------	---

Gene Ontology	Hyperlink
---------------	---------------------------

Gene Summary	subfamily A
--------------	-------------

Other Designations	testis-expressed transmembrane-4 protein
--------------------	--