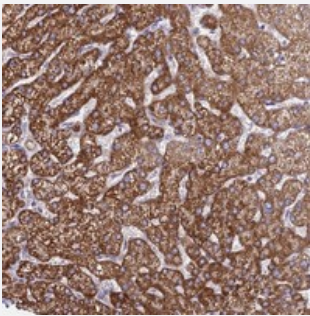


C6orf165 polyclonal antibody

Catalog # PAB24371 Size 100 uL

Applications



Immunohistochemistry (Formalin/PFA-fixed paraffin-embedded sections)

Immunohistochemical staining of human liver with C6orf165 polyclonal antibody (Cat # PAB24371) shows strong cytoplasmic positivity in hepatocytes.

Specification

| | |
|---------------------|---|
| Product Description | Rabbit polyclonal antibody raised against recombinant C6orf165. |
| Immunogen | Recombinant protein corresponding to amino acids of human C6orf165. |
| Sequence | ELGTFLTLSKKDKERQLKELTMVTGIRLFNRDCGKGGEGIDDLPAVLHVAIPATMQHIDYQLETAR SQVYRYTAILEKAANDPLMRAELQPYMLKEALYNIRQYEVFLQIILSDIITGAQEVEEMMTKQLGAHLE |
| Host | Rabbit |
| Reactivity | Human |
| Form | Liquid |
| Purification | Antigen affinity purification |
| Isotype | IgG |
| Recommend Usage | Immunohistochemistry (1:50-1:200) The optimal working dilution should be determined by the end user. |
| Storage Buffer | In PBS, pH 7.2 (40% glycerol, 0.02% sodium azide) |

Storage Instruction

Store at 4°C. For long term storage store at -20°C.
Aliquot to avoid repeated freezing and thawing.

Note

This product contains sodium azide: a POISONOUS AND HAZARDOUS SUBSTANCE which should be handled by trained staff only.

Applications

- Immunohistochemistry (Formalin/PFA-fixed paraffin-embedded sections)

Immunohistochemical staining of human liver with C6orf165 polyclonal antibody (Cat # PAB24371) shows strong cytoplasmic positivity in hepatocytes.

Gene Info — C6orf165

Entrez GeneID[154313](#)**Protein Accession#**[Q8IYR0](#)**Gene Name**

C6orf165

Gene Alias

FLJ25974, dJ382110.1

Gene Description

chromosome 6 open reading frame 165

Gene Ontology[Hyperlink](#)**Other Designations**

OTTHUMP00000016831|OTTHUMP00000040619|hypothetical protein LOC154313