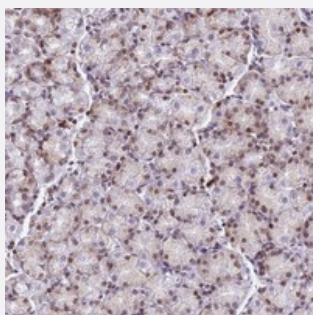


MYEOV2 polyclonal antibody

Catalog # PAB24367 Size 100 uL

Applications



Immunohistochemistry (Formalin/PFA-fixed paraffin-embedded sections)

Immunohistochemical staining of human stomach with MYEOV2 polyclonal antibody (Cat # PAB24367) shows moderate cytoplasmic and nuclear positivity in glandular cells.

Specification

| | |
|---------------------|--|
| Product Description | Rabbit polyclonal antibody raised against recombinant MYEOV2. |
| Immunogen | Recombinant protein corresponding to amino acids of human MYEOV2. |
| Sequence | ATSEGKMG TGRLRNSLRKNQSKWLGSYLEVLR TTRSRRREVS EDSTISVSTHWRGKCFKSDETPS VAGGEEGKKTTPC |
| Host | Rabbit |
| Reactivity | Human |
| Form | Liquid |
| Purification | Antigen affinity purification |
| Isotype | IgG |
| Recommend Usage | Immunohistochemistry (1:200-1:500) The optimal working dilution should be determined by the end user. |
| Storage Buffer | In PBS, pH 7.2 (40% glycerol, 0.02% sodium azide) |

Storage Instruction

Store at 4°C. For long term storage store at -20°C.
Aliquot to avoid repeated freezing and thawing.

Note

This product contains sodium azide: a POISONOUS AND HAZARDOUS SUBSTANCE which should be handled by trained staff only.

Applications

- Immunohistochemistry (Formalin/PFA-fixed paraffin-embedded sections)

Immunohistochemical staining of human stomach with MYEOV2 polyclonal antibody (Cat # PAB24367) shows moderate cytoplasmic and nuclear positivity in glandular cells.

Gene Info — MYEOV2

Entrez GeneID[150678](#)**Protein Accession#**[Q8WXC6](#)**Gene Name**

MYEOV2

Gene Alias

-

Gene Description

myeloma overexpressed 2

Gene Ontology[Hyperlink](#)**Other Designations**

OTTHUMP00000164500|helicase/primase complex protein|hypothetical protein LOC150678