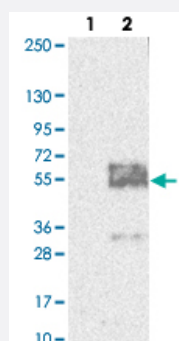


# MFSD8 polyclonal antibody

Catalog # PAB24363      Size 100 uL

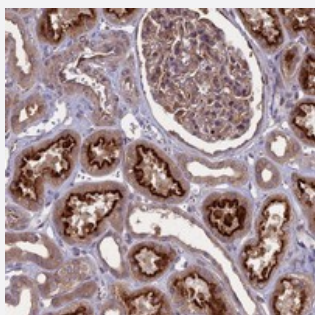
## Applications



### Western Blot (Transfected lysate)

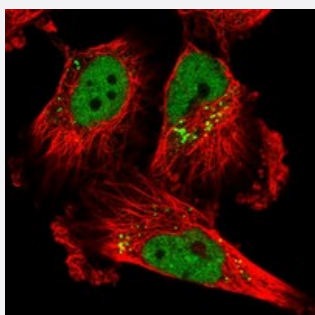
Western blot analysis of Lane 1: Negative control (vector only transfected HEK293T lysate).

Lane 2: Over-expression lysate (Co-expressed with a C-terminal myc-DDK tag (~3.1 kDa) in mammalian HEK293T cells with MFSD8 polyclonal antibody (Cat # PAB24363).



### Immunohistochemistry (Formalin/PFA-fixed paraffin-embedded sections)

Immunohistochemical staining of human kidney with MFSD8 polyclonal antibody (Cat # PAB24363) shows distinct cytoplasmic and membranous positivity in cells in tubules at 1:50-1:200 dilution.



### Immunofluorescence

Immunofluorescent staining of human cell line U-251 MG with MFSD8 polyclonal antibody (Cat # PAB24363) at 1-4 ug/mL dilution shows positivity in nucleus but not nucleoli and vesicles.

## Specification

### Product Description

Rabbit polyclonal antibody raised against recombinant MFSD8.

### Immunogen

Recombinant protein corresponding to amino acids of human MFSD8.

Sequence	MAGLRNESEQEPLLGDTPGSREWDILETEEHYKSRWR
Host	Rabbit
Reactivity	Human
Form	Liquid
Purification	Antigen affinity purification
Isotype	IgG
Recommend Usage	Immunohistochemistry (1:50-1:200) Immunofluorescence (1-4 ug/mL) The optimal working dilution should be determined by the end user.
Storage Buffer	In PBS, pH 7.2 (40% glycerol, 0.02% sodium azide)
Storage Instruction	Store at 4°C. For long term storage store at -20°C. Aliquot to avoid repeated freezing and thawing.
Note	This product contains sodium azide: a POISONOUS AND HAZARDOUS SUBSTANCE which should be handled by trained staff only.

## Applications

- Western Blot (Transfected lysate)

Western blot analysis of Lane 1: Negative control (vector only transfected HEK293T lysate).

Lane 2: Over-expression lysate (Co-expressed with a C-terminal myc-DDK tag (~3.1 kDa) in mammalian HEK293T cells with MFSD8 polyclonal antibody (Cat # PAB24363).

- Immunohistochemistry (Formalin/PFA-fixed paraffin-embedded sections)

Immunohistochemical staining of human kidney with MFSD8 polyclonal antibody (Cat # PAB24363) shows distinct cytoplasmic and membranous positivity in cells in tubules at 1:50-1:200 dilution.

- Immunofluorescence

Immunofluorescent staining of human cell line U-251 MG with MFSD8 polyclonal antibody (Cat # PAB24363) at 1-4 ug/mL dilution shows positivity in nucleus but not nucleoli and vesicles.

## Gene Info — MFSD8

Entrez GeneID [256471](#)

Protein Accession# [Q8NHS3](#)

Gene Name	MFSD8
Gene Alias	CLN7, MGC33302
Gene Description	major facilitator superfamily domain containing 8
Omim ID	<a href="#">610951 611124</a>
Gene Ontology	<a href="#">Hyperlink</a>
Gene Summary	<p>This gene encodes a ubiquitous integral membrane protein that contains a transporter domain and a major facilitator superfamily (MFS) domain. Other members of the major facilitator superfamily transport small solutes through chemiosmotic ion gradients. The substrate transported by this protein is unknown. The protein likely localizes to lysosomal membranes. Mutations in this gene are correlated with a variant form of late infantile-onset neuronal ceroid lipofuscinoses (vLINCL). [provided by RefSeq]</p>
Other Designations	ceroid-lipofuscinosis, neuronal 7, late infantile

## Pathway

- [Lysosome](#)