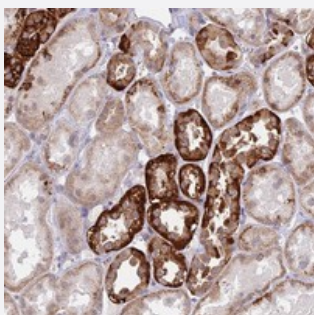


C6orf163 polyclonal antibody

Catalog # PAB24361 Size 100 uL

Applications



Immunohistochemistry (Formalin/PFA-fixed paraffin-embedded sections)

Immunohistochemical staining of human kidney with C6orf163 polyclonal antibody (Cat # PAB24361) shows strong cytoplasmic positivity in - cells in tubules .

Specification

Product Description	Rabbit polyclonal antibody raised against recombinant C6orf163.
Immunogen	Recombinant protein corresponding to amino acids of human C6orf163.
Sequence	AVCNKIIPAPFGKTFKRIHEYKPLKTRFYTHKDILDIGANILKKEEQFQEDILREHIAKAEAEVWAQANERQKQAVEKALEEAND
Host	Rabbit
Reactivity	Human
Form	Liquid
Purification	Antigen affinity purification
Isotype	IgG
Recommend Usage	Immunohistochemistry (1:200-1:500) The optimal working dilution should be determined by the end user.
Storage Buffer	In PBS, pH 7.2 (40% glycerol, 0.02% sodium azide)

Storage Instruction

Store at 4°C. For long term storage store at -20°C.
Aliquot to avoid repeated freezing and thawing.

Note

This product contains sodium azide: a POISONOUS AND HAZARDOUS SUBSTANCE which should be handled by trained staff only.

Applications

- Immunohistochemistry (Formalin/PFA-fixed paraffin-embedded sections)

Immunohistochemical staining of human kidney with C6orf163 polyclonal antibody (Cat # PAB24361) shows strong cytoplasmic positivity in - cells in tubules .

Gene Info — C6orf163

Entrez GeneID[206412](#)**Protein Accession#**[Q5TEZ5](#)**Gene Name**

C6orf163

Gene Alias

-

Gene Description

chromosome 6 open reading frame 163

Gene Ontology[Hyperlink](#)**Other Designations**

OTTHUMP00000016829|hypothetical protein LOC206412