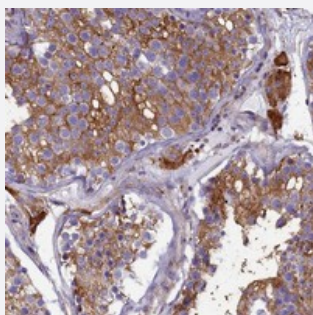


SLC26A10 polyclonal antibody

Catalog # PAB24355 Size 100 uL

Applications



Immunohistochemistry (Formalin/PFA-fixed paraffin-embedded sections)

Immunohistochemical staining of human testis with SLC26A10 polyclonal antibody (Cat # PAB24355) shows strong cytoplasmic positivity in cells in seminiferous ducts and Leydig cells at 1:200-1:500 dilution.

Specification

Product Description	Rabbit polyclonal antibody raised against recombinant SLC26A10.
Immunogen	Recombinant protein corresponding to amino acids of human SLC26A10.
Sequence	FGTRGQFRCNLEWHLGLGEGEKETSKPDGPMVAVAEPVRVVVLDFSGVTFADAAGAREVVQ
Host	Rabbit
Reactivity	Human
Form	Liquid
Purification	Antigen affinity purification
Isotype	IgG
Recommend Usage	Immunohistochemistry (1:200-1:500) The optimal working dilution should be determined by the end user.
Storage Buffer	In PBS, pH 7.2 (40% glycerol, 0.02% sodium azide)
Storage Instruction	Store at 4°C. For long term storage store at -20°C. Aliquot to avoid repeated freezing and thawing.

Note

This product contains sodium azide: a POISONOUS AND HAZARDOUS SUBSTANCE which should be handled by trained staff only.

Applications

- Immunohistochemistry (Formalin/PFA-fixed paraffin-embedded sections)

Immunohistochemical staining of human testis with SLC26A10 polyclonal antibody (Cat # PAB24355) shows strong cytoplasmic positivity in cells in seminiferous ducts and Leydig cells at 1:200-1:500 dilution.

Gene Info — SLC26A10

Entrez GeneID	65012
---------------	-----------------------

Protein Accession#	Q8NG04
--------------------	------------------------

Gene Name	SLC26A10
-----------	----------

Gene Alias	-
------------	---

Gene Description	solute carrier family 26, member 10
------------------	-------------------------------------

Gene Ontology	Hyperlink
---------------	---------------------------

Gene Summary	O
--------------	---

Other Designations	-
--------------------	---