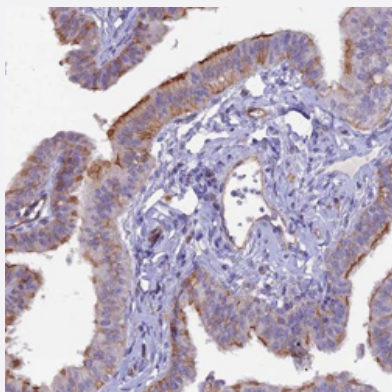


# CXorf59 polyclonal antibody

Catalog # PAB24349      Size 100 uL

## Applications



### Immunohistochemistry (Formalin/PFA-fixed paraffin-embedded sections)

Immunohistochemical staining of human fallopian tube shows strong membranous positivity in ciliated cells.

## Specification

Product Description	Rabbit polyclonal antibody raised against recombinant CXorf59.
Immunogen	Recombinant protein corresponding to amino acids of human CXorf59.
Sequence	LQMTAMVEYHPDKDEDTFDRLISIENKTTEIPLIGLIPSCQLEIESVVNFGTLVANSKVYSKEITITNH GKAPGIFKAHEYHGQLPILIFPTSGVDAKSSMVIKVDFCADQPRVDEEAIVLQGQPEMLLSIKAHV V EQIIELLSM
Host	Rabbit
Reactivity	Human
Form	Liquid
Purification	Antigen affinity purification
Isotype	IgG
Recommend Usage	Immunohistochemistry (1:20-1:50) The optimal working dilution should be determined by the end user.

Storage Buffer	In PBS, pH 7.2 (40% glycerol, 0.02% sodium azide).
Storage Instruction	Store at 4°C. For long term storage store at -20°C. Aliquot to avoid repeated freezing and thawing.
Note	This product contains sodium azide: a POISONOUS AND HAZARDOUS SUBSTANCE which should be handled by trained staff only.

## Applications

- Immunohistochemistry (Formalin/PFA-fixed paraffin-embedded sections)

Immunohistochemical staining of human fallopian tube shows strong membranous positivity in ciliated cells.

## Gene Info — CXorf59

Entrez GeneID	<a href="#">286464</a>
Protein Accession#	<a href="#">Q6ZTR5</a>
Gene Name	CXorf59
Gene Alias	FLJ36601, MGC126747, MGC126749
Gene Description	chromosome X open reading frame 59
Gene Ontology	<a href="#">Hyperlink</a>
Other Designations	OTTHUMP00000023134 hypothetical protein LOC286464