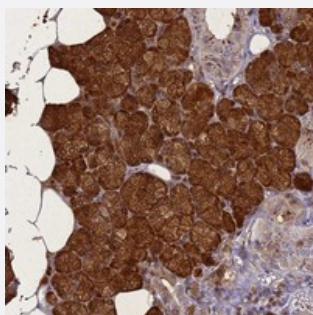


STATH polyclonal antibody

Catalog # PAB24343 Size 100 uL

Applications



Immunohistochemistry (Formalin/PFA-fixed paraffin-embedded sections)

Immunohistochemical staining of human salivary gland with STATH polyclonal antibody (Cat # PAB24343) shows strong cytoplasmic and membranous positivity in glandular cells at 1:1000-1:2500 dilution.

Specification

Product Description	Rabbit polyclonal antibody raised against recombinant STATH.
Immunogen	Recombinant protein corresponding to amino acids of human STATH.
Sequence	LRRIGRFGYGYGPYQPVPEQPLYPQPYQPQYQQYTF
Host	Rabbit
Reactivity	Human
Form	Liquid
Purification	Antigen affinity purification
Isotype	IgG
Recommend Usage	Immunohistochemistry (1:1000-1:2500) The optimal working dilution should be determined by the end user.
Storage Buffer	In PBS, pH 7.2 (40% glycerol, 0.02% sodium azide)
Storage Instruction	Store at 4°C. For long term storage store at -20°C. Aliquot to avoid repeated freezing and thawing.

Note

This product contains sodium azide: a POISONOUS AND HAZARDOUS SUBSTANCE which should be handled by trained staff only.

Applications

- Immunohistochemistry (Formalin/PFA-fixed paraffin-embedded sections)

Immunohistochemical staining of human salivary gland with STATH polyclonal antibody (Cat # PAB24343) shows strong cytoplasmic and membranous positivity in glandular cells at 1:1000-1:2500 dilution.

Gene Info — STATH

Entrez GeneID	6779
---------------	----------------------

Protein Accession#	P02808
--------------------	------------------------

Gene Name	STATH
-----------	-------

Gene Alias	STR
------------	-----

Gene Description	statherin
------------------	-----------

Omim ID	184470
---------	------------------------

Gene Ontology	Hyperlink
---------------	---------------------------

Other Designations	-
--------------------	---