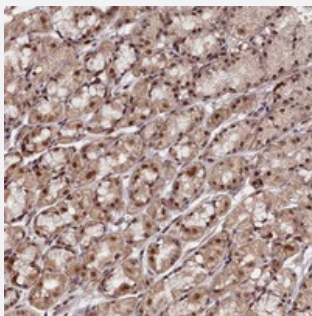


CXXC1 polyclonal antibody

Catalog # PAB24339 Size 100 uL

Applications



Immunohistochemistry (Formalin/PFA-fixed paraffin-embedded sections)

Immunohistochemical staining of human stomach with CXXC1 polyclonal antibody (Cat # PAB24339) shows nuclear and cytoplasmic positivity in glandular cells at 1:10-1:20 dilution.

Specification

Product Description	Rabbit polyclonal antibody raised against recombinant CXXC1.
Immunogen	Recombinant protein corresponding to amino acids of human CXXC1.
Sequence	VKVKHVKRREKKSEKKKEERYKRHRQKQKHDKWKHPPERADAKDPASLPQCLGPGCVRPAQP SSKYCSDDCGMKLAANRIYEILPQRIQQWQQSPCIAEEHGKKLLERIRREQQSARTRLQEMERRFH ELEAILRAKQQ
Host	Rabbit
Reactivity	Human
Form	Liquid
Purification	Antigen affinity purification
Isotype	IgG
Recommend Usage	Immunohistochemistry (1:10-1:20) The optimal working dilution should be determined by the end user.
Storage Buffer	In PBS, pH 7.2 (40% glycerol, 0.02% sodium azide)

Storage Instruction

Store at 4°C. For long term storage store at -20°C.
Aliquot to avoid repeated freezing and thawing.

Note

This product contains sodium azide: a POISONOUS AND HAZARDOUS SUBSTANCE which should be handled by trained staff only.

Applications

- Immunohistochemistry (Formalin/PFA-fixed paraffin-embedded sections)

Immunohistochemical staining of human stomach with CXXC1 polyclonal antibody (Cat # PAB24339) shows nuclear and cytoplasmic positivity in glandular cells at 1:10-1:20 dilution.

Gene Info — CXXC1

Entrez GeneID[30827](#)**Protein Accession#**[Q9P0U4](#)**Gene Name**

CXXC1

Gene Alias

2410002I16Rik, 5830420C16Rik, CFP1, CGBP, HsT2645, PCCX1, PHF18, SPP1, hCGBP

Gene Description

CXXC finger 1 (PHD domain)

Omim ID[609150](#)**Gene Ontology**[Hyperlink](#)**Gene Summary**

Proteins that contain a CXXC motif within their DNA-binding domain, such as CXXC1, recognize CpG sequences and regulate gene expression (Carlone and Skalnik, 2001 [PubMed 11604496]). [supplied by OMIM]

Other Designations

CpG binding protein|DNA-binding protein with PHD finger and CXXC domain