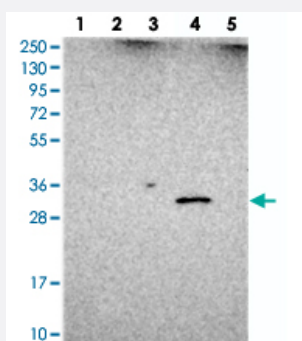


UTP23 polyclonal antibody

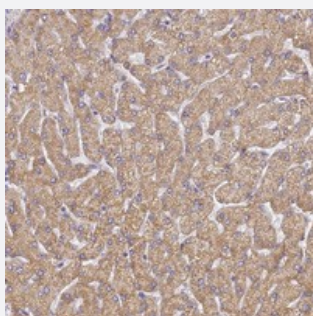
Catalog # PAB24330 Size 100 uL

Applications



Western Blot

Western blot analysis of Lane 1: RT-4, Lane 2: U-251 MG, Lane 3: Human Plasma, Lane 4: Liver, Lane 5: Tonsil with UTP23 polyclonal antibody (Cat # PAB24330) at 1:250-1:500 dilution.



Immunohistochemistry (Formalin/PFA-fixed paraffin-embedded sections)

Immunohistochemical staining of human liver with UTP23 polyclonal antibody (Cat # PAB24330) shows moderate cytoplasmic positivity in hepatocytes at 1:50-1:200 dilution.

Specification

Product Description	Rabbit polyclonal antibody raised against recombinant UTP23.
Immunogen	Recombinant protein corresponding to amino acids of human UTP23.
Sequence	KCQVRNCPHFKNAVSGSECLLSMVEEGNPHHYFVATQDQNLVSVKVKKKPGVPLMFIQNTMVLD KPSPKTIAFVKAVESGQL
Host	Rabbit
Reactivity	Human
Form	Liquid

Purification	Antigen affinity purification
Isotype	IgG
Recommend Usage	Immunohistochemistry (1:50-1:200) Western Blot (1:250-1:500) The optimal working dilution should be determined by the end user.
Storage Buffer	In PBS, pH 7.2 (40% glycerol, 0.02% sodium azide)
Storage Instruction	Store at 4°C. For long term storage store at -20°C. Aliquot to avoid repeated freezing and thawing.
Note	This product contains sodium azide: a POISONOUS AND HAZARDOUS SUBSTANCE which should be handled by trained staff only.

Applications

- Western Blot

Western blot analysis of Lane 1: RT-4, Lane 2: U-251 MG, Lane 3: Human Plasma, Lane 4: Liver, Lane 5: Tonsil with UTP23 polyclonal antibody (Cat # PAB24330) at 1:250-1:500 dilution.

- Immunohistochemistry (Formalin/PFA-fixed paraffin-embedded sections)

Immunohistochemical staining of human liver with UTP23 polyclonal antibody (Cat # PAB24330) shows moderate cytoplasmic positivity in hepatocytes at 1:50-1:200 dilution.

Gene Info — UTP23

Entrez GeneID	84294
Protein Accession#	Q9BRU9
Gene Name	UTP23
Gene Alias	C8orf53, MGC14595
Gene Description	UTP23, small subunit (SSU) processome component, homolog (yeast)
Gene Ontology	Hyperlink
Gene Summary	small subunit (SSU) processome component
Other Designations	UTP23, small subunit (SSU) processome component, homolog