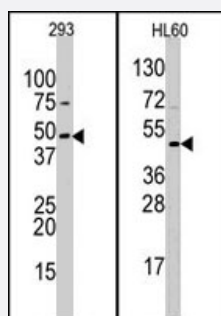


SUV39H2 polyclonal antibody

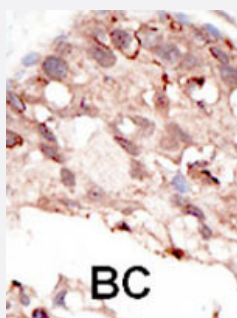
Catalog # PAB2432 Size 400 uL

Applications



Western Blot (Cell lysate)

Western blot analysis of SUV39H2 polyclonal antibody (Cat # PAB2432) in 293 and HL-60 cell line lysates (35 ug/lane). hSUV39H2-K315 (arrow) was detected using the purified polyclonal antibody.



Immunohistochemistry (Formalin/PFA-fixed paraffin-embedded sections)

Formalin-fixed and paraffin-embedded human cancer tissue reacted with the SUV39H2 polyclonal antibody (Cat # PAB2432), which was peroxidase-conjugated to the secondary antibody, followed by DAB staining. This data demonstrates the use of this antibody for immunohistochemistry; clinical relevance has not been evaluated. BC = breast carcinoma.

Specification

Product Description	Rabbit polyclonal antibody raised against synthetic peptide of SUV39H2.
Immunogen	A synthetic peptide (conjugated with KLH) corresponding to amino acids 308-337 at C-terminus of human SUV39H2.
Host	Rabbit
Reactivity	Human
Form	Liquid
Purification	Protein G purification

Recommend Usage	Immunohistochemistry (1:50-100) Western Blot (1:1000) The optimal working dilution should be determined by the end user.
Storage Buffer	In PBS (0.09% sodium azide)
Storage Instruction	Store at 4°C. For long term storage store at -20°C. Aliquot to avoid repeated freezing and thawing.
Note	This product contains sodium azide: a POISONOUS AND HAZARDOUS SUBSTANCE which should be handled by trained staff only.

Applications

- Western Blot (Cell lysate)

Western blot analysis of SUV39H2 polyclonal antibody (Cat # PAB2432) in 293 and HL-60 cell line lysates (35 ug/lane). hSUV39H2-K315 (arrow) was detected using the purified polyclonal antibody.

- Immunohistochemistry (Formalin/PFA-fixed paraffin-embedded sections)

Formalin-fixed and paraffin-embedded human cancer tissue reacted with the SUV39H2 polyclonal antibody (Cat # PAB2432), which was peroxidase-conjugated to the secondary antibody, followed by DAB staining. This data demonstrates the use of this antibody for immunohistochemistry; clinical relevance has not been evaluated. BC = breast carcinoma.

Gene Info — SUV39H2

Entrez GeneID	79723
Protein Accession#	SU92_HUMAN
Gene Name	SUV39H2
Gene Alias	FLJ23414, KMT1B
Gene Description	suppressor of variegation 3-9 homolog 2 (Drosophila)
Omim ID	606503
Gene Ontology	Hyperlink
Other Designations	OTTHUMP00000019186 OTTHUMP00000019187 suppressor of variegation 3-9 homolog 2

Publication Reference

- [Complete sequencing and characterization of 21,243 full-length human cDNAs.](#)

Ota T, Suzuki Y, Nishikawa T, Otsuki T, Sugiyama T, Irie R, Wakamatsu A, Hayashi K, Sato H, Nagai K, Kimura K, Makita H, Sekine M, Obayashi M, Nishi T, Shibahara T, Tanaka T, Ishii S, Yamamoto J, Saito K, Kawai Y, Isono Y, Nakamura Y, Nagahari K, Murakami K, Yasuda T, Iwayanagi T, Wagatsuma M, Shiratori A, Sudo H, Hosoiri T, Kaku Y, Kodaira H, Kondo H, Sugawara M, Takahashi M, Kanda K, Yokoi T, Furuya T, Kikkawa E, Omura Y, Abe K, Kamihara K, Katsuta N, Sato K, Tanikawa M, Yamazaki M, Ninomiya K

Nature Genetics 2003 Dec; 36(1):40.

- [Generation and initial analysis of more than 15,000 full-length human and mouse cDNA sequences.](#)

Strausberg RL, Feingold EA, Grouse LH, Derge JG, Klausner RD, Collins FS, Wagner L, Shenmen CM, Schuler GD, Altschul SF, Zeeberg B, Buetow KH, Schaefer CF, Bhat NK, Hopkins RF, Jordan H, Moore T, Max SI, Wang J, Hsieh F, Diatchenko L, Marusina K, Farmer AA, Rubin GM, Hong L, Stapleton M, Soares MB, Bonaldo MF, Casavant TL, Scheetz TE, Brownstein MJ, Usdin TB, Toshiyuki S, Carninci P, Prange C, Raha SS, Loquellano NA, Peters GJ, Abramson RD, Mullahy SJ, Bosak SA, McEwan PJ, McKernan KJ, Malek JA,

PNAS 2002 Dec; 99(26):16899.

Pathway

- [Lysine degradation](#)

Disease

- [Genetic Predisposition to Disease](#)
- [Lung Neoplasms](#)