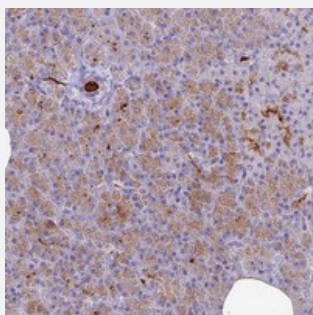


NEURL polyclonal antibody

Catalog # PAB24309 Size 100 uL

Applications



Immunohistochemistry (Formalin/PFA-fixed paraffin-embedded sections)

Immunohistochemical staining of human pancreas with NEURL polyclonal antibody (Cat # PAB24309) shows moderate cytoplasmic positivity in exocrine glandular cells at 1:20-1:50 dilution.

Specification

Product Description	Rabbit polyclonal antibody raised against recombinant NEURL.
Immunogen	Recombinant protein corresponding to amino acids of human NEURL.
Sequence	PDLVSQSGFWAKALPEEFANEGNIAFWVDKKGRV FHRINDSAVMLFFSGVRTADPLWALVD
Host	Rabbit
Reactivity	Human
Form	Liquid
Purification	Antigen affinity purification
Isotype	IgG
Recommend Usage	Immunohistochemistry (1:20-1:50) The optimal working dilution should be determined by the end user.
Storage Buffer	In PBS, pH 7.2 (40% glycerol, 0.02% sodium azide)
Storage Instruction	Store at 4°C. For long term storage store at -20°C. Aliquot to avoid repeated freezing and thawing.

Note

This product contains sodium azide: a POISONOUS AND HAZARDOUS SUBSTANCE which should be handled by trained staff only.

Applications

- Immunohistochemistry (Formalin/PFA-fixed paraffin-embedded sections)

Immunohistochemical staining of human pancreas with NEURL polyclonal antibody (Cat # PAB24309) shows moderate cytoplasmic positivity in exocrine glandular cells at 1:20-1:50 dilution.

Gene Info — NEURL

Entrez GeneID [9148](#)

Protein Accession# [O76050](#)

Gene Name NEURL

Gene Alias NEURL1, RNF67, h-neu, neu-1

Gene Description neuralized homolog (Drosophila)

Omim ID [603804](#)

Gene Ontology [Hyperlink](#)

Other Designations OTTHUMP00000020414|bA416N2.1 (neuralized|neuralized-like

Disease

- [Alzheimer Disease](#)
- [Genetic Predisposition to Disease](#)