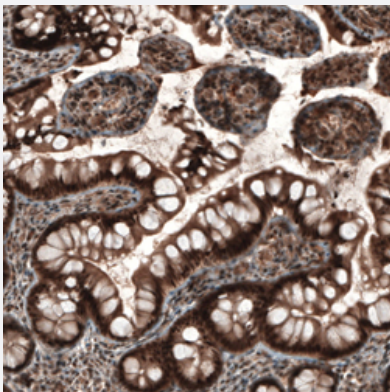


# NUDT16L1 polyclonal antibody

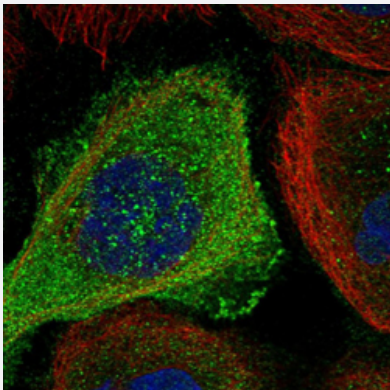
Catalog # PAB24307      Size 100 uL

## Applications



### Immunohistochemistry (Formalin/PFA-fixed paraffin-embedded sections)

Immunohistochemical staining of human small intestine shows strong nuclear positivity in glandular cells.



### Immunofluorescence

Immunofluorescent staining of human cell line A-431 shows localization to plasma membrane and cytosol.

## Specification

Product Description	Rabbit polyclonal antibody raised against recombinant NUDT16L1.
Immunogen	Recombinant protein corresponding to amino acids of human NUDT16L1.
Sequence	AVPELKQISRVEAMRLGPGWSHSCHAMLYAANPGQLFGRIPMRFSVL
Host	Rabbit
Reactivity	Human

Form	Liquid
Purification	Antigen affinity purification
Isotype	IgG
Recommend Usage	Immunofluorescence (0.25-2 ug/mL) Immunohistochemistry (1:50-1:200) The optimal working dilution should be determined by the end user.
Storage Buffer	In PBS, pH 7.2 (40% glycerol, 0.02% sodium azide).
Storage Instruction	Store at 4°C. For long term storage store at -20°C. Aliquot to avoid repeated freezing and thawing.
Note	This product contains sodium azide: a POISONOUS AND HAZARDOUS SUBSTANCE which should be handled by trained staff only.

## Applications

- Immunohistochemistry (Formalin/PFA-fixed paraffin-embedded sections)

Immunohistochemical staining of human small intestine shows strong nuclear positivity in glandular cells.

- Immunofluorescence

Immunofluorescent staining of human cell line A-431 shows localization to plasma membrane and cytosol.

## Gene Info — NUDT16L1

Entrez GeneID	<a href="#">84309</a>
Protein Accession#	<a href="#">Q9BRJ7</a>
Gene Name	NUDT16L1
Gene Alias	MGC11275, SDOS
Gene Description	nudix (nucleoside diphosphate linked moiety X)-type motif 16-like 1
Gene Ontology	<a href="#">Hyperlink</a>
Other Designations	syndesmos