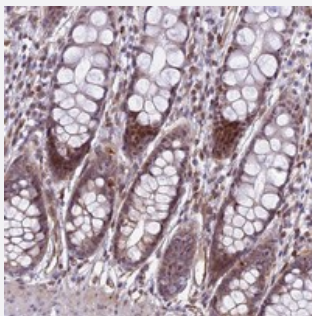


SAPCD2 polyclonal antibody

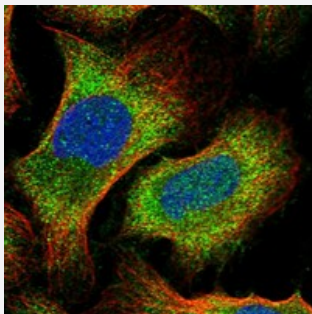
Catalog # PAB24303 Size 100 uL

Applications



Immunohistochemistry (Formalin/PFA-fixed paraffin-embedded sections)

Immunohistochemical staining of human rectum with SAPCD2 polyclonal antibody (Cat # PAB24303) shows moderate cytoplasmic and nuclear positivity in glandular cells.



Immunofluorescence

Immunofluorescent staining of human cell line U-2 OS with SAPCD2 polyclonal antibody (Cat # PAB24303) at 1-4 ug/mL dilution shows positivity in nucleus and cytoplasm.

Specification

Product Description	Rabbit polyclonal antibody raised against recombinant SAPCD2.
Immunogen	Recombinant protein corresponding to amino acids of human SAPCD2.
Sequence	ELEQEKEVLLQGLEMARGRDWYQQQLQRVQERQRRLLGQSRASADFGAAGSPRPLGRLLPKVQEVARC
Host	Rabbit
Reactivity	Human
Form	Liquid

Purification	Antigen affinity purification
Isotype	IgG
Recommend Usage	Immunohistochemistry (1:1000-1:2500) Immunofluorescence (1-4 ug/mL) The optimal working dilution should be determined by the end user.
Storage Buffer	In PBS, pH 7.2 (40% glycerol, 0.02% sodium azide)
Storage Instruction	Store at 4°C. For long term storage store at -20°C. Aliquot to avoid repeated freezing and thawing.
Note	This product contains sodium azide: a POISONOUS AND HAZARDOUS SUBSTANCE which should be handled by trained staff only.

Applications

- Immunohistochemistry (Formalin/PFA-fixed paraffin-embedded sections)

Immunohistochemical staining of human rectum with SAPCD2 polyclonal antibody (Cat # PAB24303) shows moderate cytoplasmic and nuclear positivity in glandular cells.

- Immunofluorescence

Immunofluorescent staining of human cell line U-2 OS with SAPCD2 polyclonal antibody (Cat # PAB24303) at 1-4 ug/mL dilution shows positivity in nucleus and cytoplasm.

Gene Info — SAPCD2

Entrez GeneID	89958
Protein Accession#	Q86UD0
Gene Name	SAPCD2
Gene Alias	C9orf140, p42.3
Gene Description	suppressor APC domain containing 2
Gene Ontology	Hyperlink
Other Designations	2010317E24Rik; TS/MDEP; protein C9orf140; suppressor APC domain-containing protein 2; tumor specificity and mitosis phase-dependent expression protein