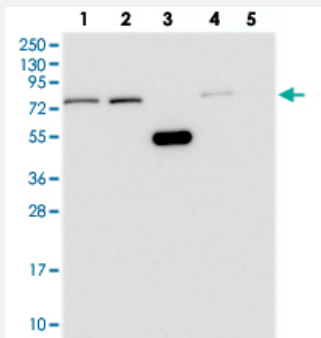


WDR35 polyclonal antibody

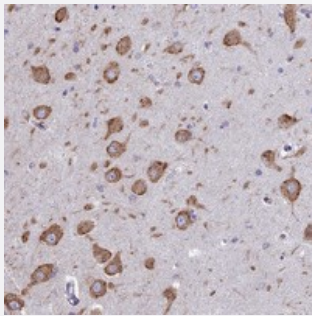
Catalog # PAB24300 Size 100 uL

Applications



Western Blot

Western blot analysis of Lane 1: RT-4, Lane 2: U-251 MG, Lane 3: Human Plasma, Lane 4: Liver, Lane 5: Tonsil with WDR35 polyclonal antibody (Cat # PAB24300).



Immunohistochemistry (Formalin/PFA-fixed paraffin-embedded sections)

Immunohistochemical staining of human hippocampus with WDR35 polyclonal antibody (Cat # PAB24300) shows strong cytoplasmic positivity in neurons.

Specification

Product Description	Rabbit polyclonal antibody raised against recombinant WDR35.
Immunogen	Recombinant protein corresponding to amino acids of human WDR35.
Sequence	SLPNVGLIQKYSLNCRAYQLSLNCNSSRLAIDISGVLTFDLDARVTDSTGQQVVGELLKLERRDV WDMKWAKDNPDLFAMMEKTRMYVFRNLDPEEPIQTSGY
Host	Rabbit
Reactivity	Human
Form	Liquid

Purification	Antigen affinity purification
Isotype	IgG
Recommend Usage	Immunohistochemistry (1:20-1:50) Western Blot (1:250-1:500) The optimal working dilution should be determined by the end user.
Storage Buffer	In PBS, pH 7.2 (40% glycerol, 0.02% sodium azide)
Storage Instruction	Store at 4°C. For long term storage store at -20°C. Aliquot to avoid repeated freezing and thawing.
Note	This product contains sodium azide: a POISONOUS AND HAZARDOUS SUBSTANCE which should be handled by trained staff only.

Applications

- Western Blot

Western blot analysis of Lane 1: RT-4, Lane 2: U-251 MG, Lane 3: Human Plasma, Lane 4: Liver, Lane 5: Tonsil with WDR35 polyclonal antibody (Cat # PAB24300).

- Immunohistochemistry (Formalin/PFA-fixed paraffin-embedded sections)

Immunohistochemical staining of human hippocampus with WDR35 polyclonal antibody (Cat # PAB24300) shows strong cytoplasmic positivity in neurons.

Gene Info — WDR35

Entrez GeneID	57539
Protein Accession#	Q9P2L0
Gene Name	WDR35
Gene Alias	KIAA1336, MGC33196
Gene Description	WD repeat domain 35
Gene Ontology	Hyperlink

Gene Summary

This gene encodes a member of the WD repeat protein family. WD repeats are minimally conserved regions of approximately 40 amino acids typically bracketed by gly-his and trp-aspartate (GH-WD), which may facilitate formation of heterotrimeric or multiprotein complexes. Members of this family are involved in a variety of cellular processes, including cell cycle progression, signal transduction, apoptosis, and gene regulation. Multiple alternatively spliced transcript variants encoding distinct isoforms have been found for this gene, but the biological validity of some variants has not been determined. [provided by RefSeq]

Other Designations

-