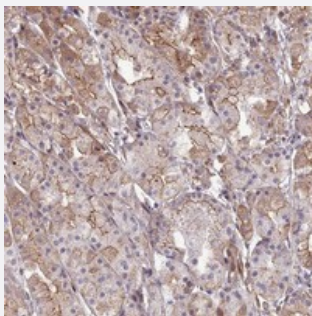


TSPYL2 polyclonal antibody

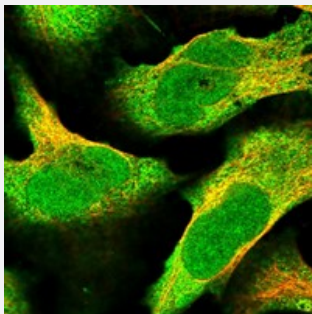
Catalog # PAB24298 Size 100 uL

Applications



Immunohistochemistry (Formalin/PFA-fixed paraffin-embedded sections)

Immunohistochemical staining of human stomach with TSPYL2 polyclonal antibody (Cat # PAB24298) shows membranous positivity in glandular cells.



Immunofluorescence

Immunofluorescent staining of human cell line U-2 OS with TSPYL2 polyclonal antibody (Cat # PAB24298) at 1-4 ug/mL dilution shows positivity in nucleus but not nucleoli and cytoplasm.

Specification

Product Description	Rabbit polyclonal antibody raised against recombinant TSPYL2.
Immunogen	Recombinant protein corresponding to amino acids of human TSPYL2.
Sequence	NPLRYLLRERGSRIKRKKQEMKKRKTRGRCEVVIMEDAPDYYAVEDIFSEISDIDETIHDIKISDFMET TDYFETTDNEITDINENICDSENPDHNEVPNNETTDNNESADDHETTDNNESADDNNENPEDNNK NTDD
Host	Rabbit
Reactivity	Human
Form	Liquid

Purification	Antigen affinity purification
Isotype	IgG
Recommend Usage	Immunohistochemistry (1:1000-1:2500) Immunofluorescence (1-4 ug/mL) The optimal working dilution should be determined by the end user.
Storage Buffer	In PBS, pH 7.2 (40% glycerol, 0.02% sodium azide)
Storage Instruction	Store at 4°C. For long term storage store at -20°C. Aliquot to avoid repeated freezing and thawing.
Note	This product contains sodium azide: a POISONOUS AND HAZARDOUS SUBSTANCE which should be handled by trained staff only.

Applications

- Immunohistochemistry (Formalin/PFA-fixed paraffin-embedded sections)

Immunohistochemical staining of human stomach with TSPYL2 polyclonal antibody (Cat # PAB24298) shows membranous positivity in glandular cells.

- Immunofluorescence

Immunofluorescent staining of human cell line U-2 OS with TSPYL2 polyclonal antibody (Cat # PAB24298) at 1-4 ug/mL dilution shows positivity in nucleus but not nucleoli and cytoplasm.

Gene Info — TSPYL2

Entrez GeneID	64061
Protein Accession#	Q9H2G4
Gene Name	TSPYL2
Gene Alias	CDA1, CINAP, CTCL, DENTT, HRIHFB2216, SE20-4
Gene Description	TSPY-like 2
Omim ID	300564
Gene Ontology	Hyperlink

Gene Summary

This gene encodes a member of the testis-specific protein Y-encoded, TSPY-like/SET/nucleosome assembly protein-1 superfamily. The encoded protein is localized to the nucleolus where it functions in chromatin remodeling and as an inhibitor of cell-cycle progression. This protein may play a role in the suppression of tumor growth. [provided by RefSeq]

Other Designations

OTTHUMP00000023335|cell division autoantigen 1|cutaneous T-cell lymphoma-associated tumor antigen se20-4|differentially expressed nucleolar TGF-beta1 target protein