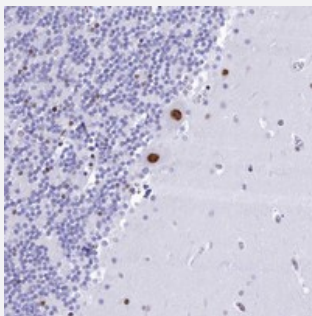


CDC26 polyclonal antibody

Catalog # PAB24297 Size 100 uL

Applications



Immunohistochemistry (Formalin/PFA-fixed paraffin-embedded sections)

Immunohistochemical staining of human cerebellum with CDC26 polyclonal antibody (Cat # PAB24297) shows strong nuclear positivity in purkinje cells.

Specification

Product Description	Rabbit polyclonal antibody raised against recombinant CDC26.
Immunogen	Recombinant protein corresponding to amino acids of human CDC26.
Sequence	MLRRKPTRLELKLDDIEEFENIRKDLETRKKQKEDVEVVGGSDGEGAIGLSSDPKSREQMINDRIGYKPQPKPNRSSQFGSL
Host	Rabbit
Reactivity	Human
Form	Liquid
Purification	Antigen affinity purification
Isotype	IgG
Recommend Usage	Immunohistochemistry (1:1000-1:2500) The optimal working dilution should be determined by the end user.
Storage Buffer	In PBS, pH 7.2 (40% glycerol, 0.02% sodium azide)

Storage Instruction

Store at 4°C. For long term storage store at -20°C.
Aliquot to avoid repeated freezing and thawing.

Note

This product contains sodium azide: a POISONOUS AND HAZARDOUS SUBSTANCE which should be handled by trained staff only.

Applications

- Immunohistochemistry (Formalin/PFA-fixed paraffin-embedded sections)

Immunohistochemical staining of human cerebellum with CDC26 polyclonal antibody (Cat # PAB24297) shows strong nuclear positivity in purkinje cells.

Gene Info — CDC26

Entrez GeneID[246184](#)**Protein Accession#**[Q8NHZ8](#)**Gene Name**

CDC26

Gene Alias

C9orf17

Gene Description

cell division cycle 26 homolog (S. cerevisiae)

Gene Ontology[Hyperlink](#)**Gene Summary**

The protein encoded by this gene is highly similar to *Saccharomyces cerevisiae* Cdc26, a component of cell cycle anaphase-promoting complex (APC). APC is composed of a group of highly conserved proteins and functions as a cell cycle-regulated ubiquitin-protein ligase. APC thus is responsible for the cell cycle regulated proteolysis of various proteins. [provided by RefSeq]

Other Designations

CDC26 subunit of anaphase promoting complex|OTTHUMP00000021952

Pathway

- [Cell cycle](#)
- [Ubiquitin mediated proteolysis](#)