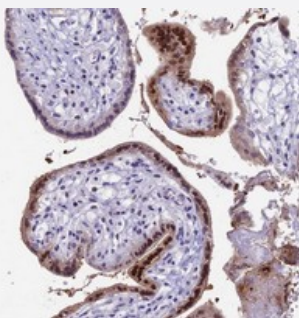


CC2D2A polyclonal antibody

Catalog # PAB24295 Size 100 uL

Applications



Immunohistochemistry (Formalin/PFA-fixed paraffin-embedded sections)

Immunohistochemical staining of human placenta with CC2D2A polyclonal antibody (Cat # PAB24295) shows strong nuclear and cytoplasmic positivity in trophoblastic cells.

Specification

Product Description	Rabbit polyclonal antibody raised against recombinant CC2D2A.
Immunogen	Recombinant protein corresponding to amino acids of human CC2D2A.
Sequence	SVTPNDQCPRAEVSRREDVKKRSVYLKVLFNNEVSRTVSRPLGADFRVHFGQIFNLQVNWPE SLTLQVYETVGHSSPTLLAEVFLPIPETTVVTGRAPTEEEVFSSN
Host	Rabbit
Reactivity	Human
Form	Liquid
Purification	Antigen affinity purification
Isotype	IgG
Recommend Usage	Immunohistochemistry (1:50-1:200) The optimal working dilution should be determined by the end user.
Storage Buffer	In PBS, pH 7.2 (40% glycerol, 0.02% sodium azide)

Storage Instruction

Store at 4°C. For long term storage store at -20°C.
Aliquot to avoid repeated freezing and thawing.

Note

This product contains sodium azide: a POISONOUS AND HAZARDOUS SUBSTANCE which should be handled by trained staff only.

Applications

- Immunohistochemistry (Formalin/PFA-fixed paraffin-embedded sections)

Immunohistochemical staining of human placenta with CC2D2A polyclonal antibody (Cat # PAB24295) shows strong nuclear and cytoplasmic positivity in trophoblastic cells.

Gene Info — CC2D2A

Entrez GeneID[57545](#)**Protein Accession#**[Q9P2K1](#)**Gene Name**

CC2D2A

Gene Alias

JBTS9, KIAA1345, MKS6

Gene Description

coiled-coil and C2 domain containing 2A

Gene Ontology[Hyperlink](#)**Gene Summary**

This gene encodes a coiled-coil and calcium binding domain protein that appears to play a critical role in cilia formation. Mutations in this gene cause Meckel syndrome type 6, as well as Joubert syndrome type 9. Alternative splicing results in multiple transcript variants. [provided by RefSeq]

Other Designations

coiled-coil and C2 domain-containing 2A