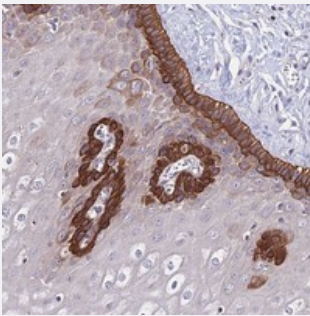


# C19orf57 polyclonal antibody

Catalog # PAB24288      Size 100 uL

## Applications



### Immunohistochemistry (Formalin/PFA-fixed paraffin-embedded sections)

Immunohistochemical staining of human esophagus with C19orf57 polyclonal antibody (Cat # PAB24288) shows strong cytoplasmic positivity in basal layers of squamous epithelia.

## Specification

Product Description	Rabbit polyclonal antibody raised against recombinant C19orf57.
Immunogen	Recombinant protein corresponding to amino acids of human C19orf57.
Sequence	SQIQDALDASDFEAPPEQLFPSGNKPGPCWPGPSSHANGDPVAVAKAQPSRLIMGTHRDLEAF KRLNYRKTKLGGKAPLPYPSKGPGNIPRGDPPWREL
Host	Rabbit
Reactivity	Human
Form	Liquid
Purification	Antigen affinity purification
Isotype	IgG
Recommend Usage	Immunohistochemistry (1:200-1:500) The optimal working dilution should be determined by the end user.
Storage Buffer	In PBS, pH 7.2 (40% glycerol, 0.02% sodium azide)

**Storage Instruction**

Store at 4°C. For long term storage store at -20°C.  
Aliquot to avoid repeated freezing and thawing.

**Note**

This product contains sodium azide: a POISONOUS AND HAZARDOUS SUBSTANCE which should be handled by trained staff only.

## Applications

- Immunohistochemistry (Formalin/PFA-fixed paraffin-embedded sections)

Immunohistochemical staining of human esophagus with C19orf57 polyclonal antibody (Cat # PAB24288) shows strong cytoplasmic positivity in basal layers of squamous epithelia.

## Gene Info — C19orf57

**Entrez GeneID**[79173](#)**Protein Accession#**[Q0VDD7](#)**Gene Name**

C19orf57

**Gene Alias**

MGC11271, MGC149720

**Gene Description**

chromosome 19 open reading frame 57

**Gene Ontology**[Hyperlink](#)**Other Designations**

hypothetical protein LOC79173|pre-T/NK cell associated protein (3B3)