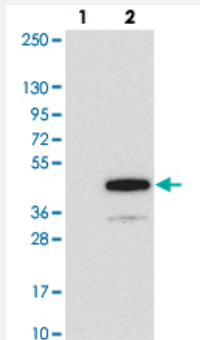


RHBDD3 polyclonal antibody

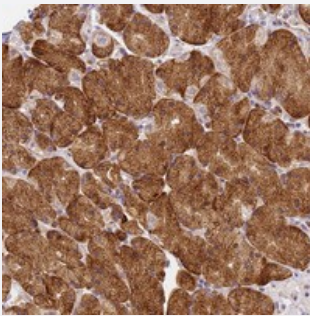
Catalog # PAB24282 Size 100 uL

Applications



Western Blot (Transfected lysate)

Western blot analysis of Lane 1: Negative control (vector only transfected HEK293T lysate).
Lane 2: Over-expression lysate (Co-expressed with a C-terminal myc-DDK tag (~3.1 kDa) in mammalian HEK293T cells with RHBDD3 polyclonal antibody (Cat # PAB24282).



Immunohistochemistry (Formalin/PFA-fixed paraffin-embedded sections)

Immunohistochemical staining of human stomach with RHBDD3 polyclonal antibody (Cat # PAB24282) shows strong cytoplasmic positivity in glandular cells at 1:200-1:500 dilution.

Specification

| | |
|---------------------|---|
| Product Description | Rabbit polyclonal antibody raised against recombinant RHBDD3. |
| Immunogen | Recombinant protein corresponding to amino acids of human RHBDD3. |
| Sequence | HWEDSALPPPSLRPVQPTWEGSSEAGLDWAGASFSPGTPMWAALDEQMLQEGIQASLLDGPA QEPQSAPWLSKSSVSSL |
| Host | Rabbit |
| Reactivity | Human |
| Form | Liquid |

| | |
|---------------------|--|
| Purification | Antigen affinity purification |
| Isotype | IgG |
| Recommend Usage | Immunohistochemistry (1:200-1:500) The optimal working dilution should be determined by the end user. |
| Storage Buffer | In PBS, pH 7.2 (40% glycerol, 0.02% sodium azide) |
| Storage Instruction | Store at 4°C. For long term storage store at -20°C. Aliquot to avoid repeated freezing and thawing. |
| Note | This product contains sodium azide: a POISONOUS AND HAZARDOUS SUBSTANCE which should be handled by trained staff only. |

Applications

- Western Blot (Transfected lysate)

Western blot analysis of Lane 1: Negative control (vector only transfected HEK293T lysate).

Lane 2: Over-expression lysate (Co-expressed with a C-terminal myc-DDK tag (~3.1 kDa) in mammalian HEK293T cells with RHBDD3 polyclonal antibody (Cat # PAB24282).

- Immunohistochemistry (Formalin/PFA-fixed paraffin-embedded sections)

Immunohistochemical staining of human stomach with RHBDD3 polyclonal antibody (Cat # PAB24282) shows strong cytoplasmic positivity in glandular cells at 1:200-1:500 dilution.

Gene Info — RHBDD3

| | |
|--------------------|------------------------------|
| Entrez GeneID | 25807 |
| Protein Accession# | Q9Y3P4 |
| Gene Name | RHBDD3 |
| Gene Alias | C22orf3, HS984G1A, PTAG |
| Gene Description | rhomboid domain containing 3 |
| Gene Ontology | Hyperlink |
| Other Designations | pituitary tumor apoptosis |