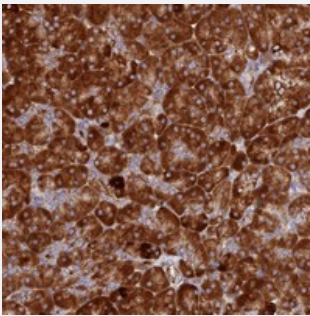


C12orf60 polyclonal antibody

Catalog # PAB24277 Size 100 uL

Applications



Immunohistochemistry (Formalin/PFA-fixed paraffin-embedded sections)

Immunohistochemical staining of human pancreas with C12orf60 polyclonal antibody (Cat # PAB24277) shows strong cytoplasmic positivity in exocrine glandular cells at 1:500-1:1000 dilution.

Specification

Product Description	Rabbit polyclonal antibody raised against recombinant C12orf60.
Immunogen	Recombinant protein corresponding to amino acids of human C12orf60.
Sequence	SSKTTMDTLKKLQDVLKTEDSKNPTKSAADLLEQVKAMGPILILQKAIKTMEMNISVFKKASD
Host	Rabbit
Reactivity	Human
Form	Liquid
Purification	Antigen affinity purification
Isotype	IgG
Recommend Usage	Immunohistochemistry (1:500-1:1000) The optimal working dilution should be determined by the end user.
Storage Buffer	In PBS, pH 7.2 (40% glycerol, 0.02% sodium azide)
Storage Instruction	Store at 4°C. For long term storage store at -20°C. Aliquot to avoid repeated freezing and thawing.

Note

This product contains sodium azide: a POISONOUS AND HAZARDOUS SUBSTANCE which should be handled by trained staff only.

Applications

- Immunohistochemistry (Formalin/PFA-fixed paraffin-embedded sections)

Immunohistochemical staining of human pancreas with C12orf60 polyclonal antibody (Cat # PAB24277) shows strong cytoplasmic positivity in exocrine glandular cells at 1:500-1:1000 dilution.

Gene Info — C12orf60

Entrez GeneID	144608
---------------	------------------------

Protein Accession#	Q5U649
--------------------	------------------------

Gene Name	C12orf60
-----------	----------

Gene Alias	MGC47869
------------	----------

Gene Description	chromosome 12 open reading frame 60
------------------	-------------------------------------

Gene Ontology	Hyperlink
---------------	---------------------------

Other Designations	hypothetical protein LOC144608
--------------------	--------------------------------