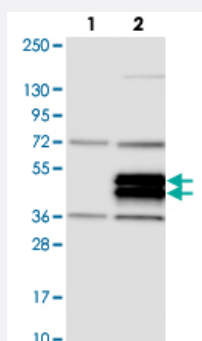


# TRIML2 polyclonal antibody

Catalog # PAB24273      Size 100 uL

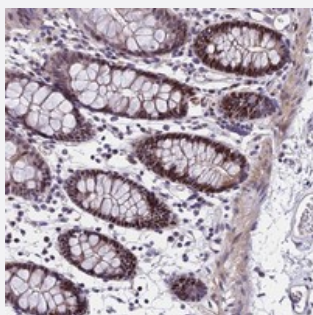
## Applications



### Western Blot (Transfected lysate)

Western blot analysis of Lane 1: Negative control (vector only transfected HEK293T lysate).

Lane 2: Over-expression lysate (Co-expressed with a C-terminal myc-DDK tag (~3.1 kDa) in mammalian HEK293T cells with TRIML2 polyclonal antibody (Cat # PAB24273).



### Immunohistochemistry (Formalin/PFA-fixed paraffin-embedded sections)

Immunohistochemical staining of human colon with TRIML2 polyclonal antibody (Cat # PAB24273) shows strong nuclear positivity in glandular cells at 1:1000-1:2500 dilution.

## Specification

Product Description	Rabbit polyclonal antibody raised against recombinant TRIML2.
Immunogen	Recombinant protein corresponding to amino acids of human TRIML2.
Sequence	KMIESEYSMLRLLNEECEQNLQRQQECISDLNLRETLLNQAIKLATELEEMFQEMLQRLGRVGRE NMEKLK
Host	Rabbit
Reactivity	Human
Form	Liquid

Purification	Antigen affinity purification
Isotype	IgG
Recommend Usage	Immunohistochemistry (1:1000-1:2500) The optimal working dilution should be determined by the end user.
Storage Buffer	In PBS, pH 7.2 (40% glycerol, 0.02% sodium azide)
Storage Instruction	Store at 4°C. For long term storage store at -20°C. Aliquot to avoid repeated freezing and thawing.
Note	This product contains sodium azide: a POISONOUS AND HAZARDOUS SUBSTANCE which should be handled by trained staff only.

## Applications

- Western Blot (Transfected lysate)

Western blot analysis of Lane 1: Negative control (vector only transfected HEK293T lysate).

Lane 2: Over-expression lysate (Co-expressed with a C-terminal myc-DDK tag (~3.1 kDa) in mammalian HEK293T cells with TRIML2 polyclonal antibody (Cat # PAB24273).

- Immunohistochemistry (Formalin/PFA-fixed paraffin-embedded sections)

Immunohistochemical staining of human colon with TRIML2 polyclonal antibody (Cat # PAB24273) shows strong nuclear positivity in glandular cells at 1:1000-1:2500 dilution.

## Gene Info — TRIML2

Entrez GeneID	<a href="#">205860</a>
Protein Accession#	<a href="#">Q8N7C3</a>
Gene Name	TRIML2
Gene Alias	FLJ25801, MGC138164, MGC138166, SPRYD6
Gene Description	tripartite motif family-like 2
Gene Ontology	<a href="#">Hyperlink</a>
Other Designations	SPRY domain containing 6