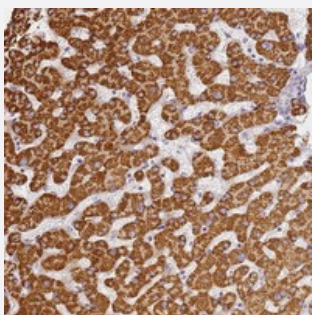


SLC38A9 polyclonal antibody

Catalog # PAB24268 Size 100 uL

Applications



Immunohistochemistry (Formalin/PFA-fixed paraffin-embedded sections)

Immunohistochemical staining of human liver with SLC38A9 polyclonal antibody (Cat # PAB24268) shows strong cytoplasmic positivity in hepatocytes.

Specification

Product Description	Rabbit polyclonal antibody raised against recombinant SLC38A9.
Immunogen	Recombinant protein corresponding to amino acids of human SLC38A9.
Sequence	NSDSRHLGTSEVDHERDPGPMNIQFEPSDLRSKRPFCEIPTNMVNVNHVIQRVSDHASAMNKRIHY YSRLTTPADKALIAPDHVVPAPPEECYVYSPLGSAY
Host	Rabbit
Reactivity	Human
Form	Liquid
Purification	Antigen affinity purification
Isotype	IgG
Recommend Usage	Immunohistochemistry (1:1000-1:2500) The optimal working dilution should be determined by the end user.
Storage Buffer	In PBS, pH 7.2 (40% glycerol, 0.02% sodium azide)

Storage Instruction

Store at 4°C. For long term storage store at -20°C.
Aliquot to avoid repeated freezing and thawing.

Note

This product contains sodium azide: a POISONOUS AND HAZARDOUS SUBSTANCE which should be handled by trained staff only.

Applications

- Immunohistochemistry (Formalin/PFA-fixed paraffin-embedded sections)

Immunohistochemical staining of human liver with SLC38A9 polyclonal antibody (Cat # PAB24268) shows strong cytoplasmic positivity in hepatocytes.

Gene Info — SLC38A9

Entrez GeneID[153129](#)**Protein Accession#**[Q8NBW4](#)**Gene Name**

SLC38A9

Gene Alias

FLJ46104, FLJ90709, MGC120544

Gene Description

solute carrier family 38, member 9

Gene Ontology[Hyperlink](#)**Gene Summary**

O

Other Designations

OTTHUMP00000161835