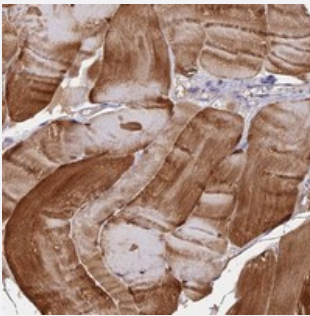


FAM168B polyclonal antibody

Catalog # PAB24267 Size 100 uL

Applications



Immunohistochemistry (Formalin/PFA-fixed paraffin-embedded sections)

Immunohistochemical staining of human skeletal muscle with FAM168B polyclonal antibody (Cat # PAB24267) shows strong cytoplasmic and nuclear positivity in myocytes at 1:50-1:200 dilution.

Specification

Product Description	Rabbit polyclonal antibody raised against recombinant FAM168B.
Immunogen	Recombinant protein corresponding to amino acids of human FAM168B.
Sequence	MNPVYSPGSSGVPYANAKGIGYPAGFPMGYAAAAPAYSPNMYPGANPTFQTGYTPGTPYKVSCTSGAVPPYSSSP
Host	Rabbit
Reactivity	Human
Form	Liquid
Purification	Antigen affinity purification
Isotype	IgG
Recommend Usage	Immunohistochemistry (1:50-1:200) The optimal working dilution should be determined by the end user.
Storage Buffer	In PBS, pH 7.2 (40% glycerol, 0.02% sodium azide)

Storage Instruction

Store at 4°C. For long term storage store at -20°C.
Aliquot to avoid repeated freezing and thawing.

Note

This product contains sodium azide: a POISONOUS AND HAZARDOUS SUBSTANCE which should be handled by trained staff only.

Applications

- Immunohistochemistry (Formalin/PFA-fixed paraffin-embedded sections)

Immunohistochemical staining of human skeletal muscle with FAM168B polyclonal antibody (Cat # PAB24267) shows strong cytoplasmic and nuclear positivity in myocytes at 1:50-1:200 dilution.

Gene Info — FAM168B

Entrez GeneID[130074](#)**Protein Accession#**[A1KXE4](#)**Gene Name**

FAM168B

Gene Alias

MGC87527

Gene Description

family with sequence similarity 168, member B

Gene Ontology[Hyperlink](#)**Gene Summary**

O

Other Designations

hypothetical protein LOC130074|p20