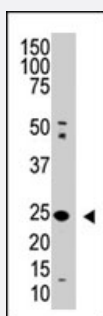


SENP8 polyclonal antibody

Catalog # PAB2423

Size 400 uL

Applications



Western Blot (Tissue lysate)

Western blot analysis of SENP8 polyclonal antibody (Cat # PAB2423) in mouse spleen lysate. SENP8 (arrow) was detected using purified polyclonal antibody. Secondary HRP-anti-rabbit was used for signal visualization with chemiluminescence.

Specification

Product Description	Rabbit polyclonal antibody raised against synthetic peptide of SENP8.
Immunogen	A synthetic peptide (conjugated with KLH) corresponding to N-terminus of human SENP8.
Host	Rabbit
Reactivity	Human, Mouse
Form	Liquid
Purification	Protein G purification
Recommend Usage	Western Blot (1:1000) The optimal working dilution should be determined by the end user.
Storage Buffer	In PBS (0.09% sodium azide)
Storage Instruction	Store at 4°C. For long term storage store at -20°C. Aliquot to avoid repeated freezing and thawing.
Note	This product contains sodium azide: a POISONOUS AND HAZARDOUS SUBSTANCE which should be handled by trained staff only.

Applications

- Western Blot (Tissue lysate)

Western blot analysis of SENP8 polyclonal antibody (Cat # PAB2423) in mouse spleen lysate. SENP8 (arrow) was detected using purified polyclonal antibody. Secondary HRP-anti-rabbit was used for signal visualization with chemiluminescence.

Gene Info — SENP8

Entrez GeneID	123228
Protein Accession#	NP_660205:Q96LD8
Gene Name	SENP8
Gene Alias	DEN1, HsT17512, NEDP1, PRSC2
Gene Description	SUMO/sentrin specific peptidase family member 8
Omim ID	608659
Gene Ontology	Hyperlink
Gene Summary	NEDD8 (MIM 603171) is a ubiquitin-like protein that becomes conjugated to the cullin (see CUL1; MIM 603134) subunit of several ubiquitin ligases. This conjugation, called neddylation, is required for optimal ubiquitin ligase activity. NEDD8-specific deneddylases, such as NEDP1, or DEN1, are required to process the NEDD8 propeptide at a C-terminal diglycine motif and to remove NEDD8 from cullins (Gan-Erdene et al., 2003 [PubMed 12759363]).[supplied by OMIM]
Other Designations	NEDD8-specific protease 1 SUMO/sentrin specific protease family member 8 deneddylase 1 protease, cysteine, 2 (NEDD8 specific) sentrin/SUMO-specific protease SENP8

Publication Reference

- [DEN1 is a dual function protease capable of processing the C terminus of Nedd8 and deconjugating hyper-neddylated CUL1.](#)

Wu K, Yamoah K, Dolios G, Gan-Erdene T, Tan P, Chen A, Lee CG, Wei N, Wilkinson KD, Wang R, Pan ZQ.
The Journal of Biological Chemistry 2003 Aug; 278(31):28882.

Application: WB, Recombinant protein

- [Identification and characterization of DEN1, a deneddylase of the ULP family.](#)

Gan-Erdene T, Nagamalleswari K, Yin L, Wu K, Pan ZQ, Wilkinson KD.
The Journal of Biological Chemistry 2003 Aug; 278(31):28892.

- [NEDP1, a highly conserved cysteine protease that deNEDDylates Cullins.](#)

Mendoza HM, Shen LN, Botting C, Lewis A, Chen J, Ink B, Hay RT.

The Journal of Biological Chemistry 2003 Jul; 278(28):25637.