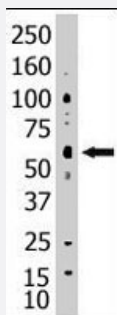


SEN2 polyclonal antibody

Catalog # PAB2415

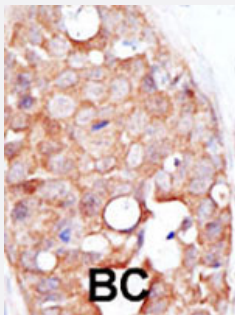
Size 400 uL

Applications



Western Blot (Cell lysate)

Western blot analysis of SENP2 polyclonal antibody (Cat # PAB2415) in HL-60 cell lysate. SENP2 (arrow) was detected using purified polyclonal antibody. Secondary HRP-anti-rabbit was used for signal visualization with chemiluminescence.



Immunohistochemistry (Formalin/PFA-fixed paraffin-embedded sections)

Formalin-fixed and paraffin-embedded human cancer tissue reacted with the SENP2 polyclonal antibody (Cat # PAB2415), which was peroxidase-conjugated to the secondary antibody, followed by DAB staining. This data demonstrates the use of this antibody for immunohistochemistry; clinical relevance has not been evaluated. BC = breast carcinoma.

Specification

Product Description	Rabbit polyclonal antibody raised against synthetic peptide of SENP2.
Immunogen	A synthetic peptide (conjugated with KLH) corresponding to C-terminus of human SENP2.
Host	Rabbit
Reactivity	Human
Form	Liquid
Purification	Protein G purification

Recommend Usage	Western Blot (1:1000) Immunohistochemistry (1:50-100) The optimal working dilution should be determined by the end user.
Storage Buffer	In PBS (0.09% sodium azide)
Storage Instruction	Store at 4°C. For long term storage store at -20°C. Aliquot to avoid repeated freezing and thawing.
Note	This product contains sodium azide: a POISONOUS AND HAZARDOUS SUBSTANCE which should be handled by trained staff only.

Applications

- Western Blot (Cell lysate)

Western blot analysis of SENP2 polyclonal antibody (Cat # PAB2415) in HL-60 cell lysate. SENP2 (arrow) was detected using purified polyclonal antibody. Secondary HRP-anti-rabbit was used for signal visualization with chemiluminescence.

- Immunohistochemistry (Formalin/PFA-fixed paraffin-embedded sections)

Formalin-fixed and paraffin-embedded human cancer tissue reacted with the SENP2 polyclonal antibody (Cat # PAB2415), which was peroxidase-conjugated to the secondary antibody, followed by DAB staining. This data demonstrates the use of this antibody for immunohistochemistry; clinical relevance has not been evaluated. BC = breast carcinoma.

Gene Info — SENP2

Entrez GeneID	59343
Protein Accession#	NP_067640;Q9HC62
Gene Name	SENP2
Gene Alias	AXAM2, DKFZp762A2316, KIAA1331, SMT3IP2
Gene Description	SUMO1/sentrin/SMT3 specific peptidase 2
Omim ID	608261
Gene Ontology	Hyperlink
Gene Summary	SUMO1 (UBL1; MIM 601912) is a small ubiquitin-like protein that can be covalently conjugated to other proteins. SENP2 is one of a group of enzymes that process newly synthesized SUMO1 into the conjugatable form and catalyze the deconjugation of SUMO1-containing species.[supplied by OMIM]
Other Designations	SUMO1/sentrin/SMT3 specific protease 2 sentrin-specific protease

Publication Reference

- [Enzymes of the SUMO modification pathway localize to filaments of the nuclear pore complex.](#)

Zhang H, Saitoh H, Matunis MJ.

Molecular and Cellular Biology 2002 Sep; 22(18):6498.

- [Association of the human SUMO-1 protease SENP2 with the nuclear pore.](#)

Hang J, Dasso M.

The Journal of Biological Chemistry 2002 May; 277(22):19961.

- [Characterization of a novel mammalian SUMO-1/Smt3-specific isopeptidase, a homologue of rat axam, which is an axin-binding protein promoting beta-catenin degradation.](#)

Nishida T, Kaneko F, Kitagawa M, Yasuda H.

The Journal of Biological Chemistry 2001 Oct; 276(42):39060.

Pathway

- [Wnt signaling pathway](#)