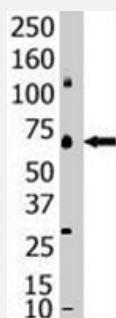


SENP1 polyclonal antibody

Catalog # PAB2412

Size 400 uL

Applications



Western Blot (Cell lysate)

Western blot analysis of SENP1 polyclonal antibody (Cat # PAB2412) in whole HL-60 cell lysate : SENP1 (Arrow) was detected using purified polyclonal antibody. Secondary HRP-anti-rabbit was used for signal visualization with chemiluminescence.

Specification

Product Description	Rabbit polyclonal antibody raised against synthetic peptide of SENP1.
Immunogen	A synthetic peptide (conjugated with KLH) corresponding to C-terminus of humanSENP1.
Host	Rabbit
Reactivity	Human
Form	Liquid
Purification	Protein G purification
Recommend Usage	Western Blot (1:1000) The optimal working dilution should be determined by the end user.
Storage Buffer	In PBS (0.09% sodium azide)
Storage Instruction	Store at 4°C. For long term storage store at -20°C. Aliquot to avoid repeated freezing and thawing.
Note	This product contains sodium azide: a POISONOUS AND HAZARDOUS SUBSTANCE which should be handled by trained staff only.

Applications

- Western Blot (Cell lysate)

Western blot analysis of SENP1 polyclonal antibody (Cat # PAB2412) in whole HL-60 cell lysate : SENP1 (Arrow) was detected using purified polyclonal antibody. Secondary HRP-anti-rabbit was used for signal visualization with chemiluminescence.

Gene Info — SENP1

Entrez GeneID	29843
Protein Accession#	NP_055369:Q9P0U3
Gene Name	SENP1
Gene Alias	SuPr-2
Gene Description	SUMO1/sentrin specific peptidase 1
Gene Ontology	Hyperlink
Gene Summary	The covalent modification of proteins by the small ubiquitin (UBB; MIM 191339)-like protein SUMO (see SUMO1, MIM 601912) is implicated in the regulation of nucleocytoplasmic transport, genomic stability, gene transcription, and other processes. Sumoylation is catalyzed on target lysine residues by a multienzyme process and is reversed by desumoylating enzymes such as SENP1 (Yamaguchi et al., 2005 [PubMed 15923632]).[supplied by OMIM]
Other Designations	SUMO1/sentrin specific protease 1 sentrin/SUMO-specific protease sentrin/SUMO-specific protease 1

Publication Reference

- [Differential regulation of sentrinized proteins by a novel sentrin-specific protease.](#)

Gong L, Millas S, Maul GG, Yeh ET.

The Journal of Biological Chemistry 2000 Feb; 275(5):3355.