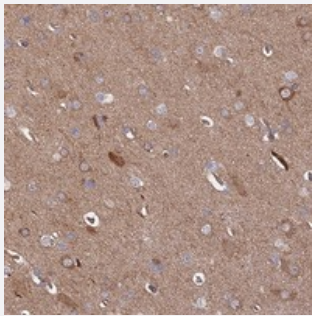


INSM2 polyclonal antibody

Catalog # PAB24091 Size 100 uL

Applications



Immunohistochemistry (Formalin/PFA-fixed paraffin-embedded sections)

Immunohistochemical staining of human cerebral cortex with INSM2 polyclonal antibody (Cat # PAB24091) shows moderate cytoplasmic positivity in neuronal cells.

Specification

Product Description	Rabbit polyclonal antibody raised against recombinant INSM2.
Immunogen	Recombinant protein corresponding to amino acids of human INSM2.
Sequence	KHLSTHEAGSARALAPGFGSERGAPLAFACPLCGAHFPTADIREKHRLWHAVREELLLPALAGA PPETSGPSGSDGSAQQIFCKHCPSTF
Host	Rabbit
Reactivity	Human
Form	Liquid
Purification	Antigen affinity purification
Isotype	IgG
Recommend Usage	Immunohistochemistry (1:50-1:200) The optimal working dilution should be determined by the end user.
Storage Buffer	In PBS, pH 7.2 (40% glycerol, 0.02% sodium azide)

Storage Instruction

Store at 4°C. For long term storage store at -20°C.
Aliquot to avoid repeated freezing and thawing.

Note

This product contains sodium azide: a POISONOUS AND HAZARDOUS SUBSTANCE which should be handled by trained staff only.

Applications

- Immunohistochemistry (Formalin/PFA-fixed paraffin-embedded sections)

Immunohistochemical staining of human cerebral cortex with INSM2 polyclonal antibody (Cat # PAB24091) shows moderate cytoplasmic positivity in neuronal cells.

Gene Info — INSM2

Entrez GeneID[84684](#)**Protein Accession#**[Q96T92](#)**Gene Name**

INSM2

Gene Alias

IA-6, mlt1

Gene Description

insulinoma-associated 2

Gene Ontology[Hyperlink](#)**Other Designations**

OTTHUMP00000178845|insulinoma-associated protein IA-6