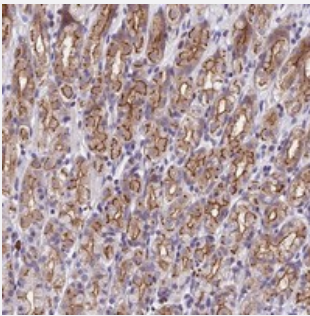


# C6orf132 polyclonal antibody

Catalog # PAB24076      Size 100 uL

## Applications



### Immunohistochemistry (Formalin/PFA-fixed paraffin-embedded sections)

Immunohistochemical staining of human stomach with C6orf132 polyclonal antibody (Cat # PAB24076) shows strong membranous positivity in glandular cells.

## Specification

|                            |  |
|----------------------------|--|
| <b>Product Description</b> | Rabbit polyclonal antibody raised against recombinant C6orf132.  |
| <b>Immunogen</b>           | Recombinant protein corresponding to amino acids of human C6orf132.                                      |
| <b>Sequence</b>            | QGTFSKLFGKKHTTTPSTSLYATNPPWIFTQEAPEEGTGGFDGIYYGDNRFNTVSESGTATLKARP<br>RVRPLLTFPLNAQEN                    |
| <b>Host</b>                | Rabbit   |
| <b>Reactivity</b>          | Human  |
| <b>Form</b>                | Liquid   |
| <b>Purification</b>        | Antigen affinity purification  |
| <b>Isotype</b>             | IgG  |
| <b>Recommend Usage</b>     | Immunohistochemistry (1:200-1:500)<br>The optimal working dilution should be determined by the end user. |
| <b>Storage Buffer</b>      | In PBS, pH 7.2 (40% glycerol, 0.02% sodium azide)  |

**Storage Instruction**

Store at 4°C. For long term storage store at -20°C.  
Aliquot to avoid repeated freezing and thawing.

**Note**

This product contains sodium azide: a POISONOUS AND HAZARDOUS SUBSTANCE which should be handled by trained staff only.

## Applications

- Immunohistochemistry (Formalin/PFA-fixed paraffin-embedded sections)

Immunohistochemical staining of human stomach with C6orf132 polyclonal antibody (Cat # PAB24076) shows strong membranous positivity in glandular cells.

## Gene Info — C6orf132

**Entrez GeneID**[647024](#)**Protein Accession#**[Q5T0Z8](#)**Gene Name**

C6orf132

**Gene Alias**

FLJ90086, bA7K24.2

**Gene Description**

chromosome 6 open reading frame 132

**Gene Ontology**[Hyperlink](#)**Other Designations**

-