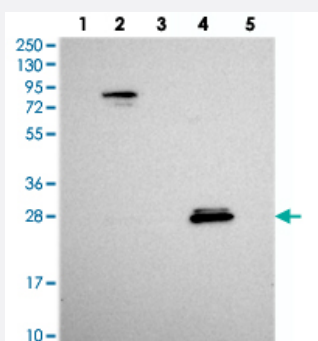


SPIN4 polyclonal antibody

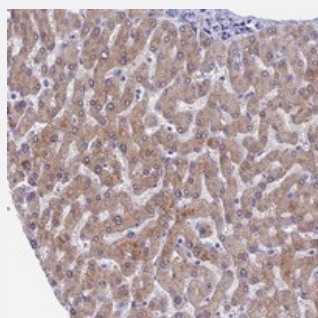
Catalog # PAB24072 Size 100 uL

Applications



Western Blot

Western blot analysis of Lane 1: RT-4, Lane 2: U-251 MG, Lane 3: Human Plasma, Lane 4: Liver, Lane 5: Tonsil with SPIN4 polyclonal antibody (Cat # PAB24072) at 1:250-1:500 dilution.



Immunohistochemistry (Formalin/PFA-fixed paraffin-embedded sections)

Immunohistochemical staining of human liver with SPIN4 polyclonal antibody (Cat # PAB24072) shows moderate cytoplasmic positivity in hepatocytes at 1:50-1:200 dilution.

Specification

Product Description	Rabbit polyclonal antibody raised against recombinant SPIN4.
Immunogen	Recombinant protein corresponding to amino acids of human SPIN4.
Sequence	MSPPTVPPMGVDGVSAYLMKKRHTHRKQRRKPTFLTRRNIVG
Host	Rabbit
Reactivity	Human
Form	Liquid
Purification	Antigen affinity purification

Isotype	IgG
Recommend Usage	Immunohistochemistry (1:50-1:200) Western Blot (1:250-1:500) The optimal working dilution should be determined by the end user.
Storage Buffer	In PBS, pH 7.2 (40% glycerol, 0.02% sodium azide)
Storage Instruction	Store at 4°C. For long term storage store at -20°C. Aliquot to avoid repeated freezing and thawing.
Note	This product contains sodium azide: a POISONOUS AND HAZARDOUS SUBSTANCE which should be handled by trained staff only.

Applications

- Western Blot

Western blot analysis of Lane 1: RT-4, Lane 2: U-251 MG, Lane 3: Human Plasma, Lane 4: Liver, Lane 5: Tonsil with SPIN4 polyclonal antibody (Cat # PAB24072) at 1:250-1:500 dilution.

- Immunohistochemistry (Formalin/PFA-fixed paraffin-embedded sections)

Immunohistochemical staining of human liver with SPIN4 polyclonal antibody (Cat # PAB24072) shows moderate cytoplasmic positivity in hepatocytes at 1:50-1:200 dilution.

Gene Info — SPIN4

Entrez GeneID	139886
Protein Accession#	Q56A73
Gene Name	SPIN4
Gene Alias	FLJ44984, MGC133224
Gene Description	spindlin family, member 4
Gene Ontology	Hyperlink
Gene Summary	O
Other Designations	-